

「 」  
.

2000 . . .

: ( )  
:  
( )  
( )  
( )  
( )  
( )

1. :
2. : 2000 1 1 2000 12 31
3. :
- 4.

가.

		1	2	3	4	5	6	7	8	9	10	11	12	
가.	<div> <div>○</div> <div>○</div> <div>○</div> <div>○</div> <div>○</div> <div>○</div> </div> <div>DB</div> <div>,</div>													
(%)														

.

(1)

○

(28 ) 40

○

DB

○

,

○

○

○

,

,

**5.**

1)

40

DB

○

2)

,

,

○

.

가

○

**6.**

○

.

가

○

‘

’

○

가

○

.

○

DB

○

○

.

1

.....

2

.....

1

.....

2

.....

3

.....

3

.....

# 1

가 , 가  
(Man  
,  
Made Noise) 가 .  
가  
, 가,  
,  
,  
가 .  
.  
'94  
(28 ) 40 DB  
DB  
40 , DB  
.  
40  
DB  
,  
,  
가  
가

## 2

### 1

#### 1.

가. (T S9965)

, ,

.

(1)

○ (Vertical Dipole Antenna) HE309

- : 20 1000 MHz

- : , 가

- 1GHz

- FM

○ (Log Periodic Antenna) HL025- AMP

- : 1 18 GHz

- : 8.5dB ,

(32dB )

- 1GHz

○

가

GP-IB (General Purpose Instruments Bus, IEEE 488)

,

가

.

○ Vertical Dipole Antenna &



(2)

: ESMI Rohde & Schwarz  
H/W S/W  
(CISPR 16-1)가 가  
. 20Hz 40GHz - 150 +30  
dBm , EMI Test Receiver, Scalar  
Network Analyzer .  
EMI Receiver (Bandwidth)

(3)

: Pentium PC Controller ,

,

## 2.

가. (Frequency Domain) -

- : 30MHz 10GHz
- 30MHz 10GHz
- 

30MHz 300MHz	50kHz	120kHz	2	EMI Receiver
300MHz 1GHz	100kHz	120kHz	2	
1GHz 10GHz	1MHz	120kHz	2	EMI Receiver

. (Time Domain)

- - : 30MHz 18GHz 5
  - 10
  - 35, 40, 50, 74, 110, 220 MHz
  - 300, 350, 450, 485, 580 MHz
  - 650, 740, 800, 850, 900 MHz
  - 1000, 1500, 1800, 2100, 3000 MHz
  - 5000, 8000, 10000, 15000, 18000 MHz
- 

1GHz	5 seconds	120kHz	130	EMI Receiver
1GHz	5 seconds	1MHz	120	EMI Receiver



2

1.

가. ( '99 )

20	(8.5 ), (14 ), (19 )
20 50	(22 ), (23 ), (25 ), (25 ), (27 ), (27 ), (27 ), (33 ), (34 ), (34 ), (34 ), (40 )
50 100	(51 ), (51 ), (55 ), (57 ), (61 ), (91 ), (92 ),
100	(136 ), (137 ), (251 ), (251 ), (382 ), (1,026 ),

.

					.
					.

## 2.

가. 30MHz 300MHz

○

- 38.25 41 :
- 46.51 49.99 : 1 ( )
- 54.00 72.00 : TV ( 2, 3, 4)
- 76.00 88.00 : TV ( 5, 6)
- 88.00 108.0 : FM ( 1 ~ 60)
- 117.975 137 :
- 174.00 216.0 : TV ( 7 ~ 13)

○ : 35, 40, 50, 74, 110, 220 MHz

나. 300MHz 1000MHz

○

- 371.50 381.50 : TRS
- 389.50 399.51 : TRS
- 470.00 740.00 : TV ( 14 ~ 58
- 740.00 752.00 : TV ( 59 ~ 60)
- 806.00 821.00 : TRS( )
- 851.00 866.00 : TRS( )
- 821.00 824.00 : ( )
- 866.00 869.00 : ( )
- 824.00 849.00 : ( )
- 869.00 894.00 : ( )
- 914.02 914.98 : 2 ( )
- 896.00 898.00 : ( )
- 936.00 938.00 : ( )
- 910.00 914.00 : CT - 2
- 952.02 952.98 : 2 ( )

○ : 300, 350, 450, 485, 580, 650, 740, 800, 850, 900 MHz

. 1GHz 18GHz

○

- 1750.00 1780.00 : PCS( )

- 1840.00 1870.00 : PCS( )

- 1885 1980, 2010 2025, 2110 2170 : IMT 2000

- 5250 5350 :

- 8275.02 8343.33 :

- 1750 1780 : ( )

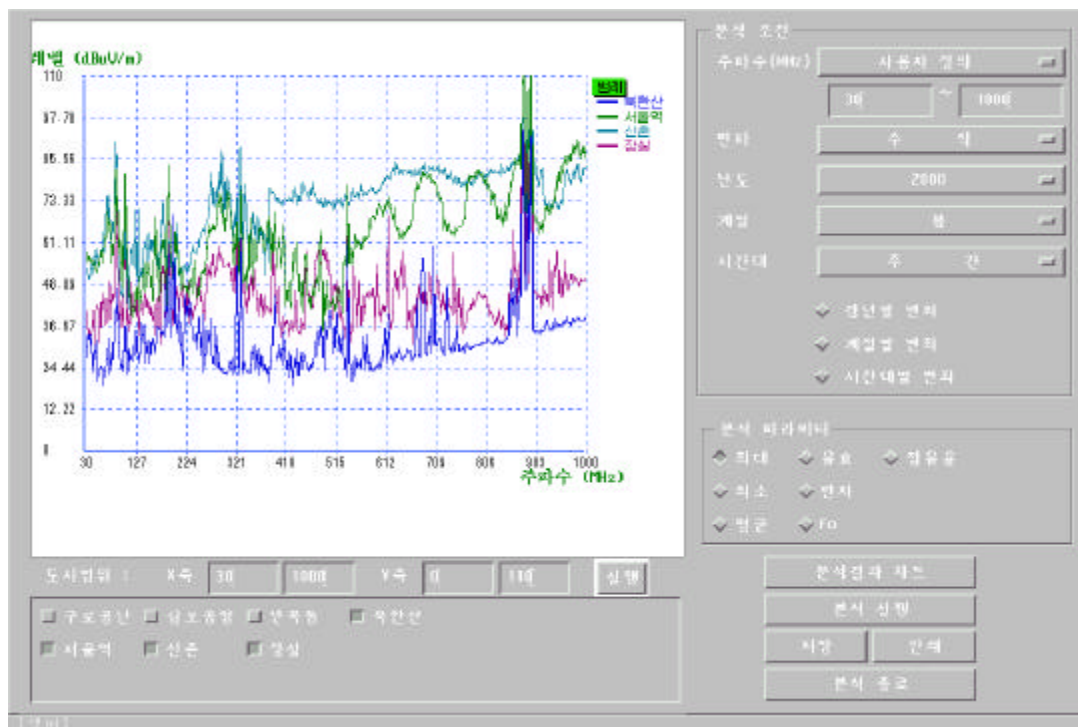
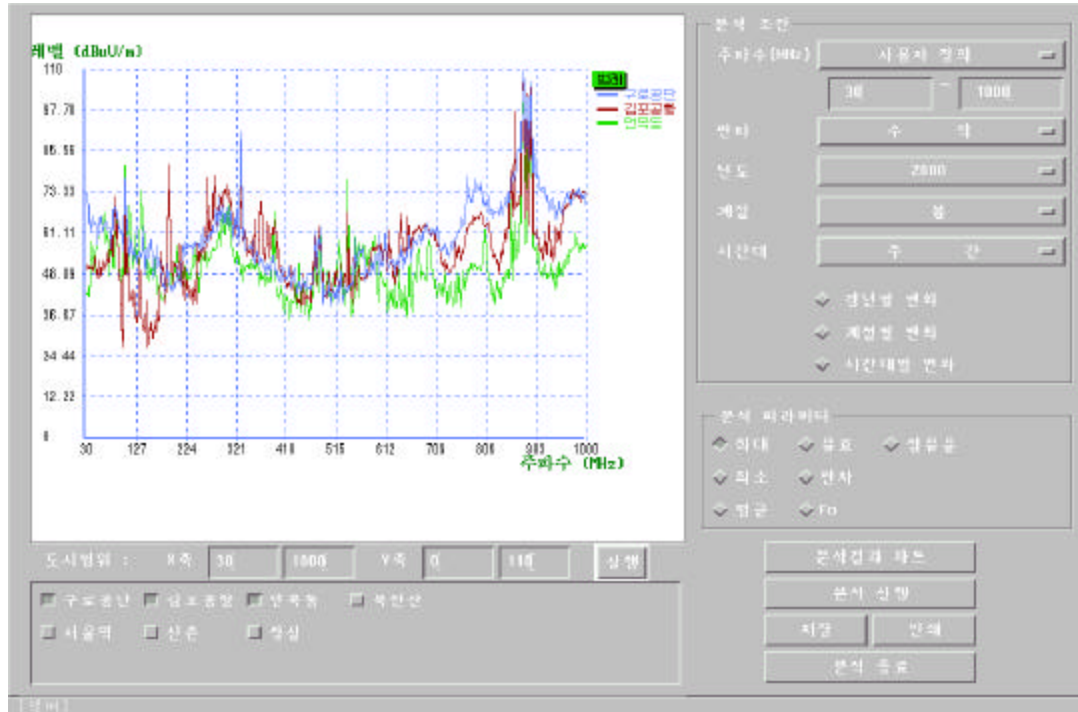
- 1840 1870 : ( )

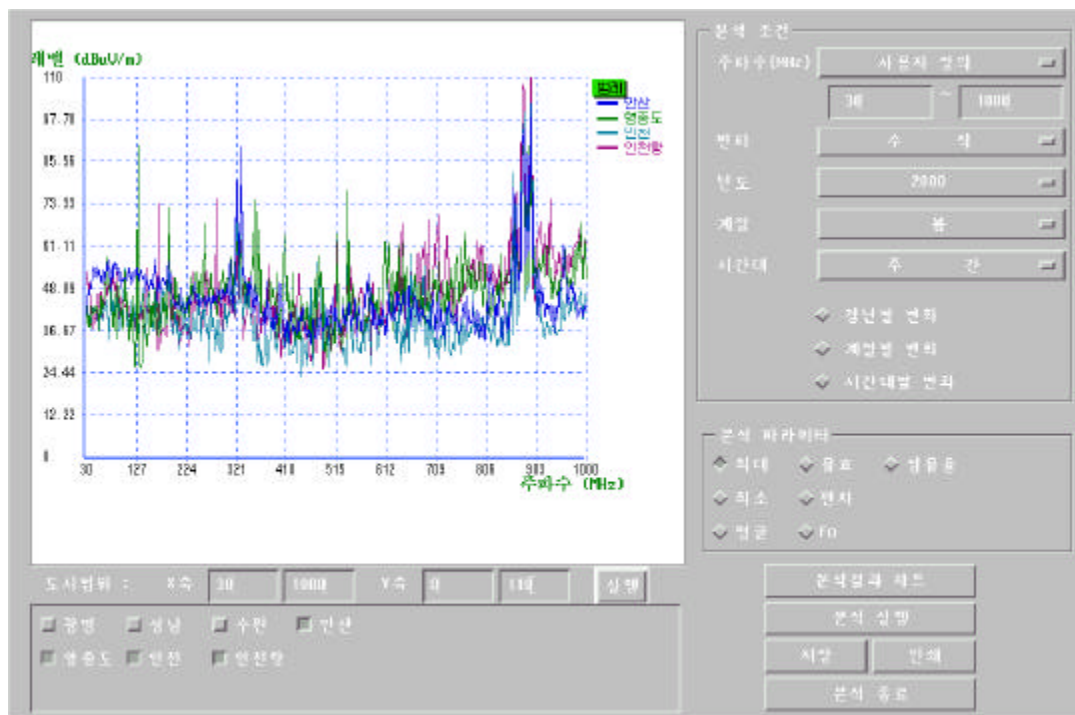
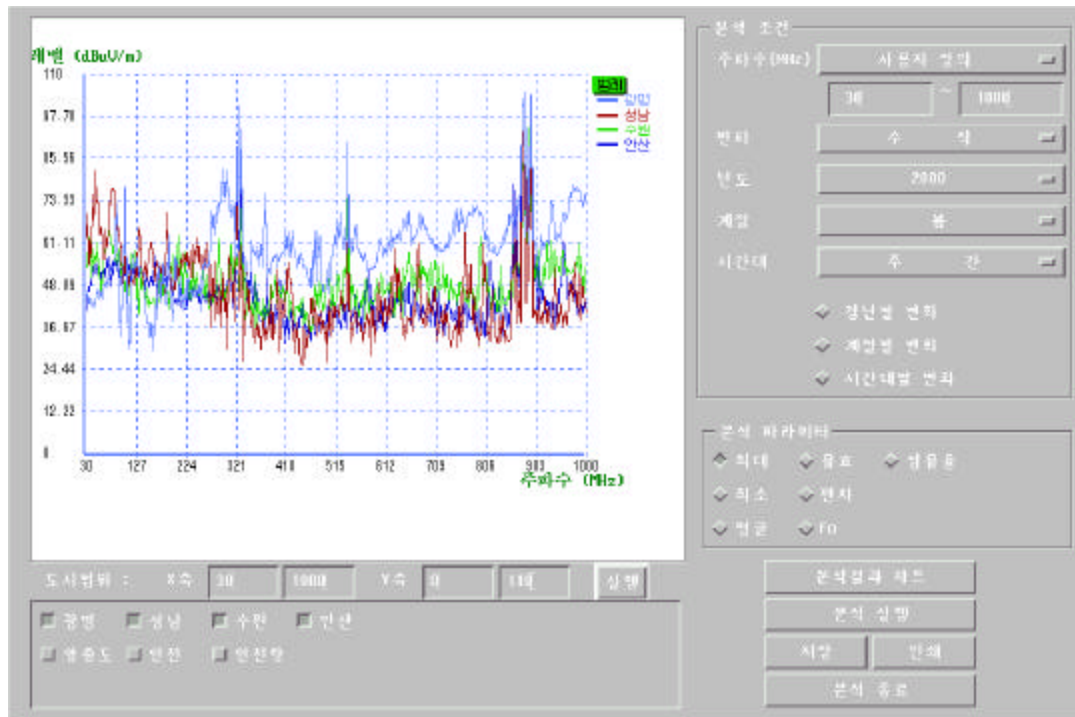
○ : 1, 1.5, 1.8, 2.1, 3, 5, 8, 10, 15, 18 GHz

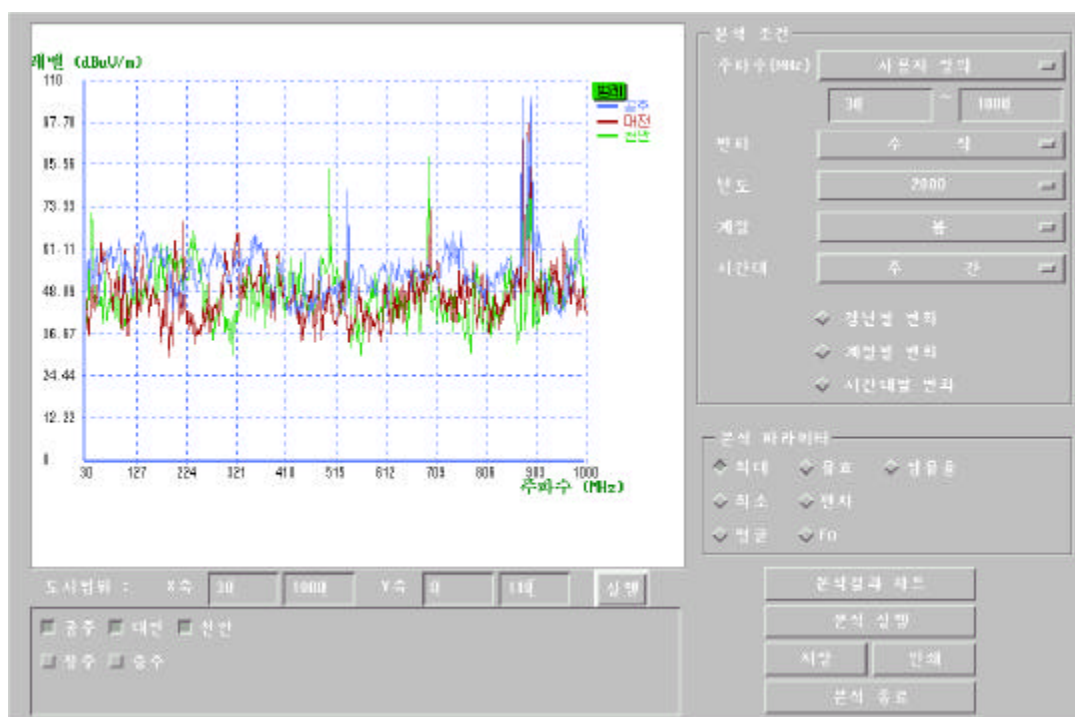
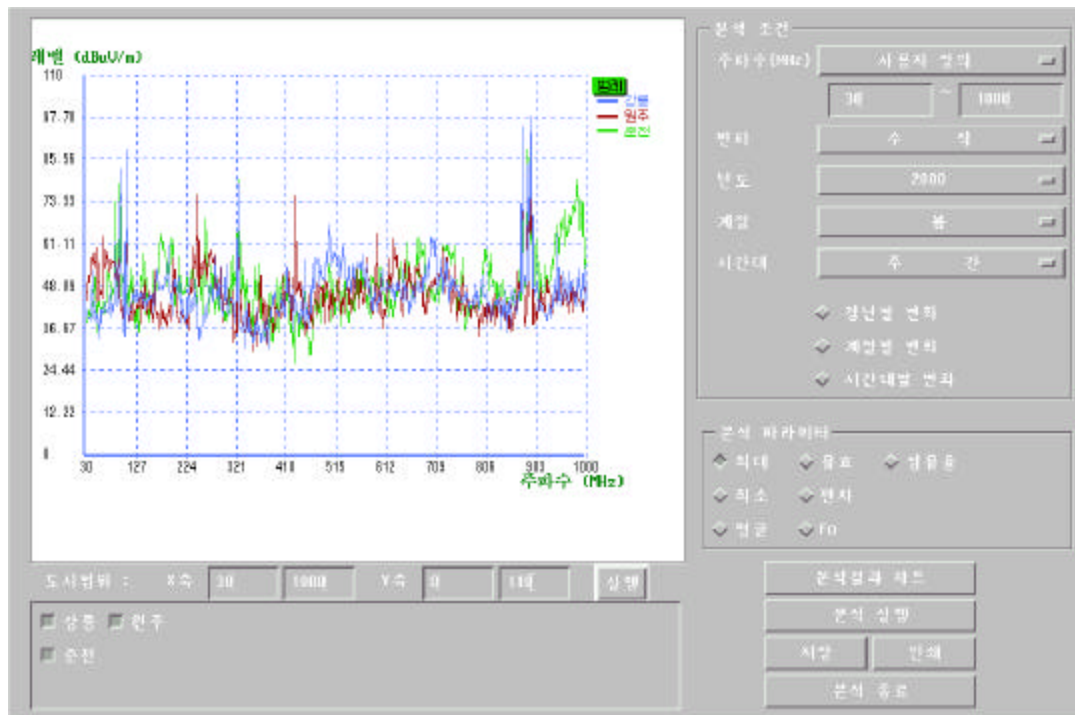
3

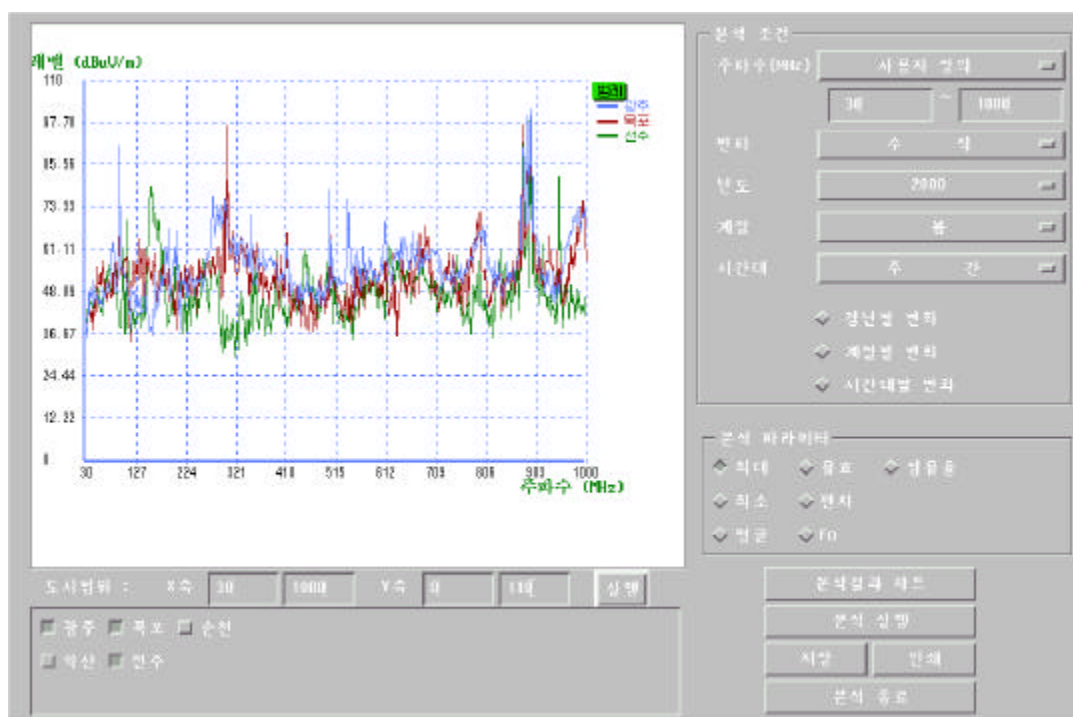
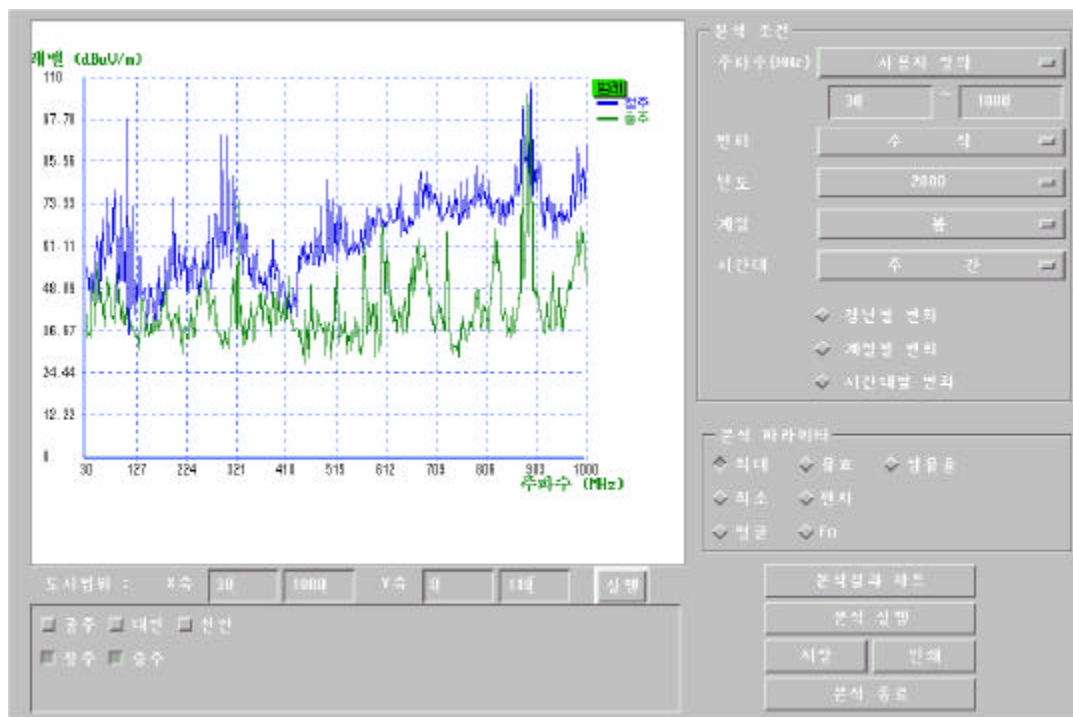
1.

가.

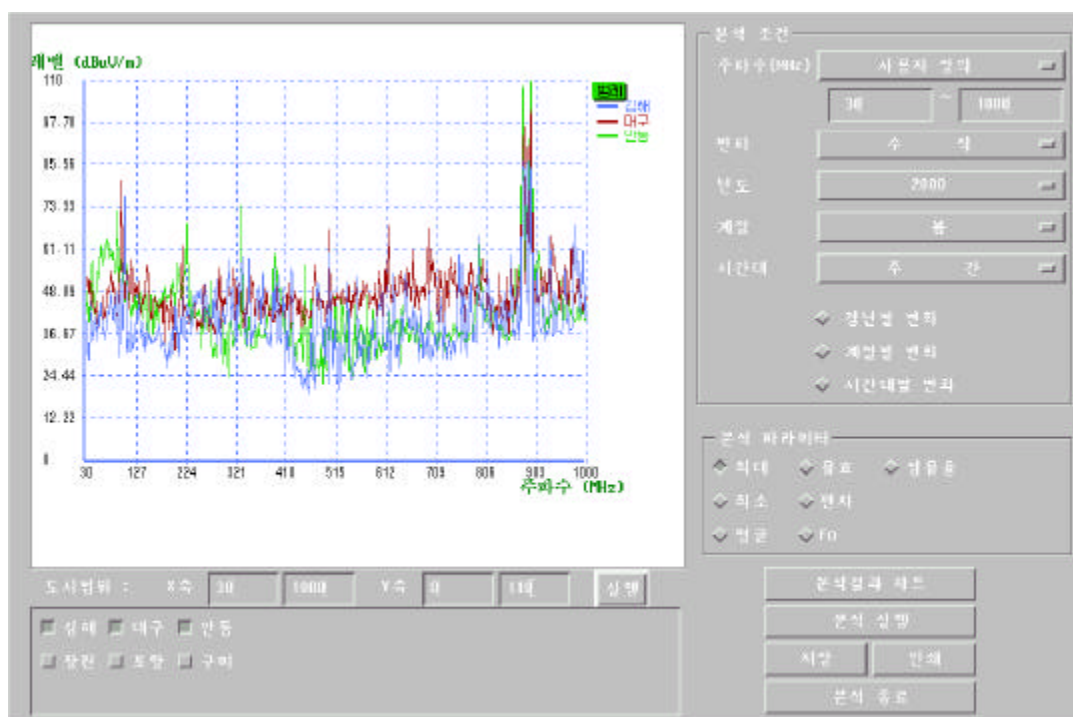
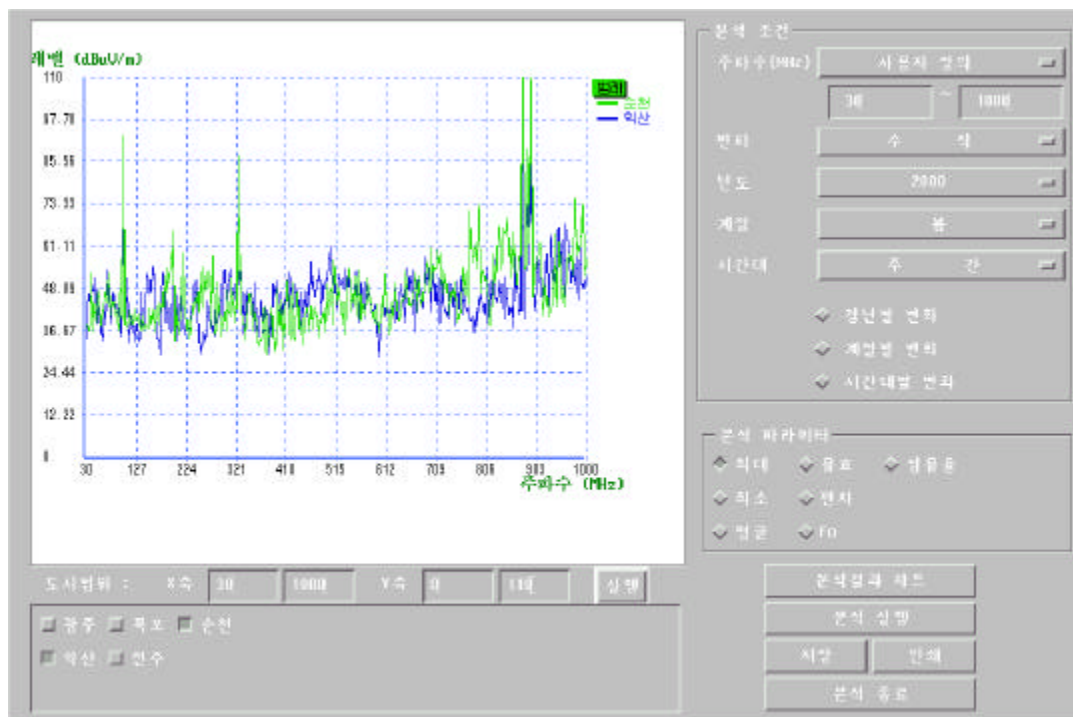




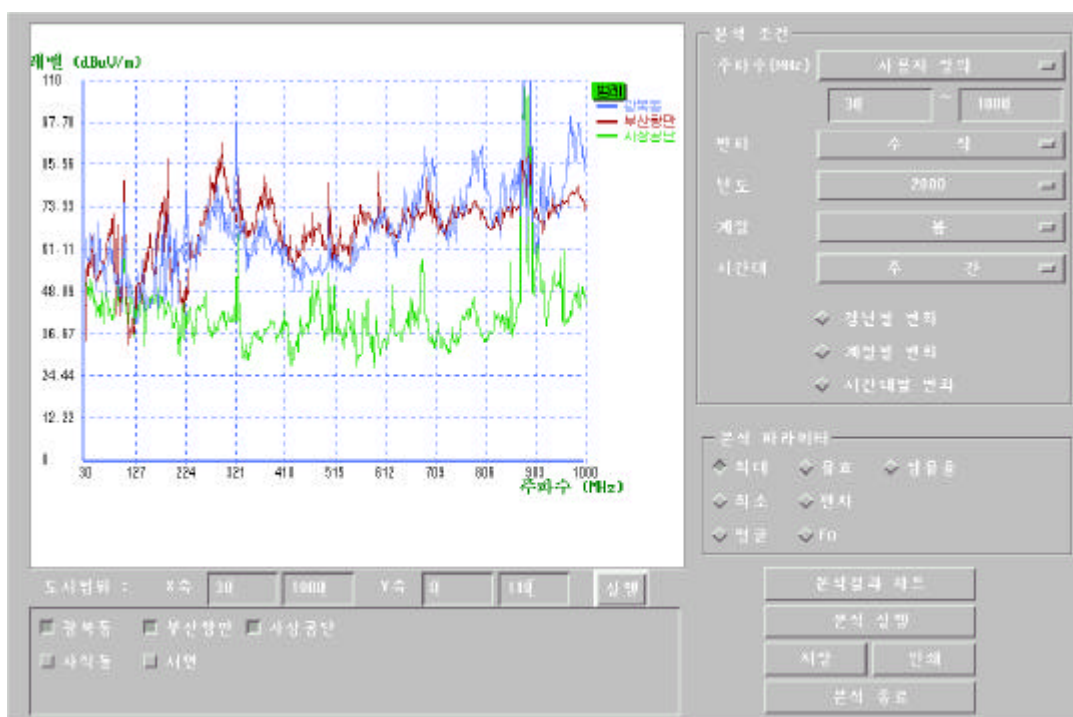
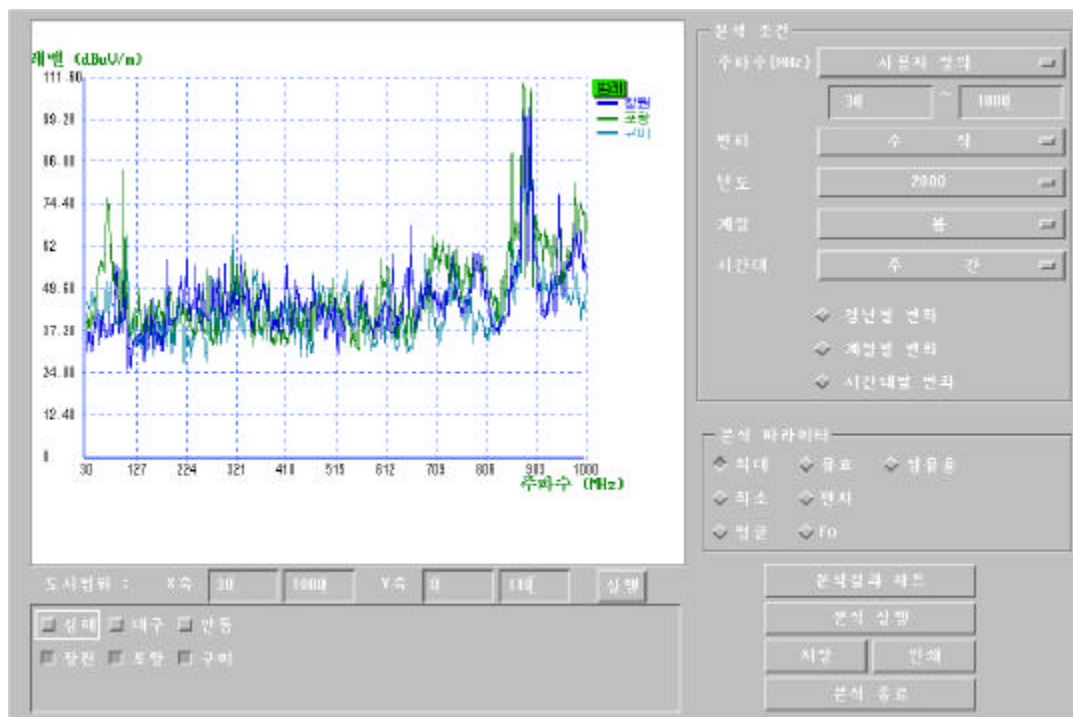


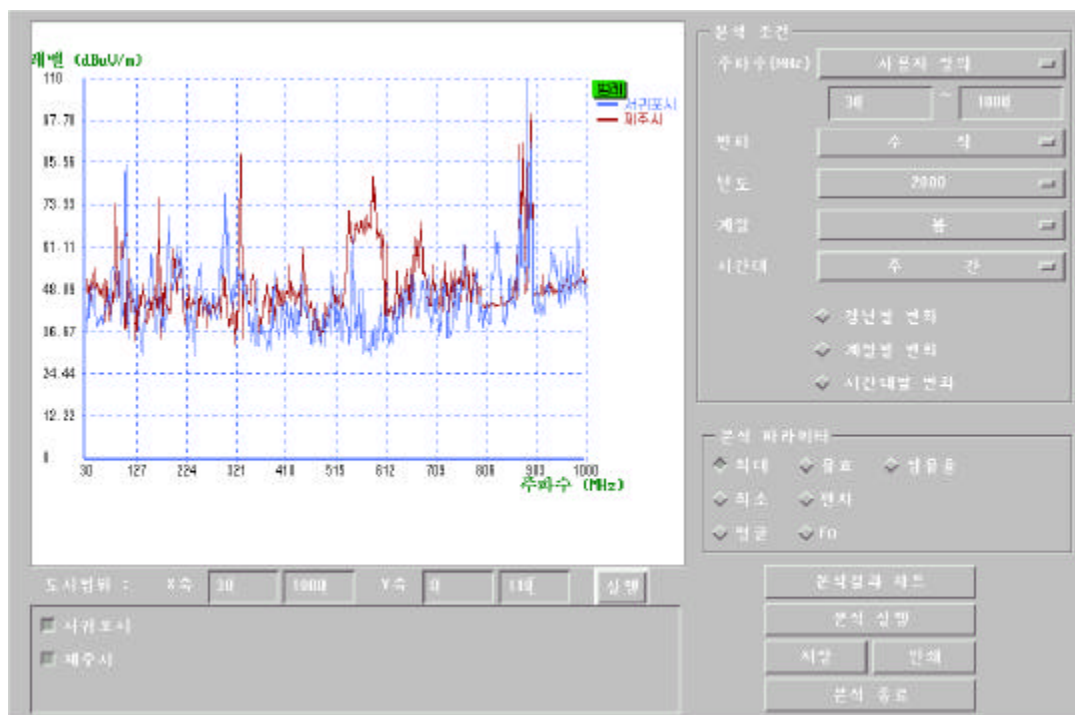
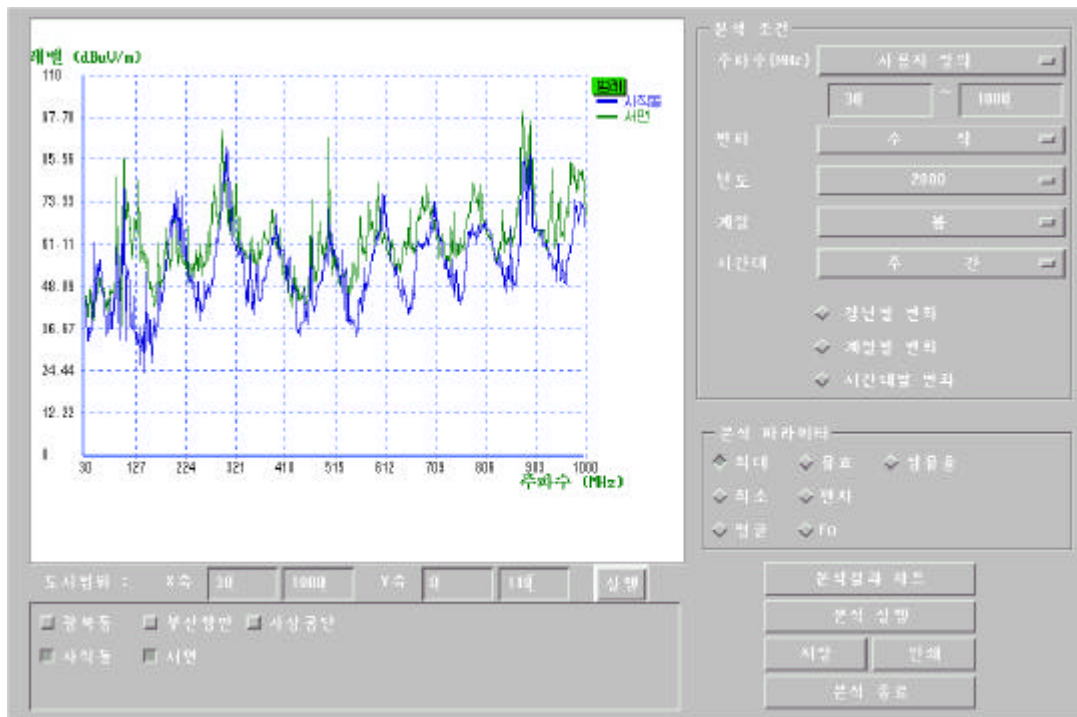












·

○

가

·

가

·

○

,

,

,

가

가

30dB $\mu$ V/m

가

·

○

,

가

,

,

,

·

○

2 3dB $\mu$ V/m 가

·

○

가

,

,

·

○

3 10dB $\mu$ V/m 가

가

·

·

가

·

○ 가

가

.

○ , ,

.

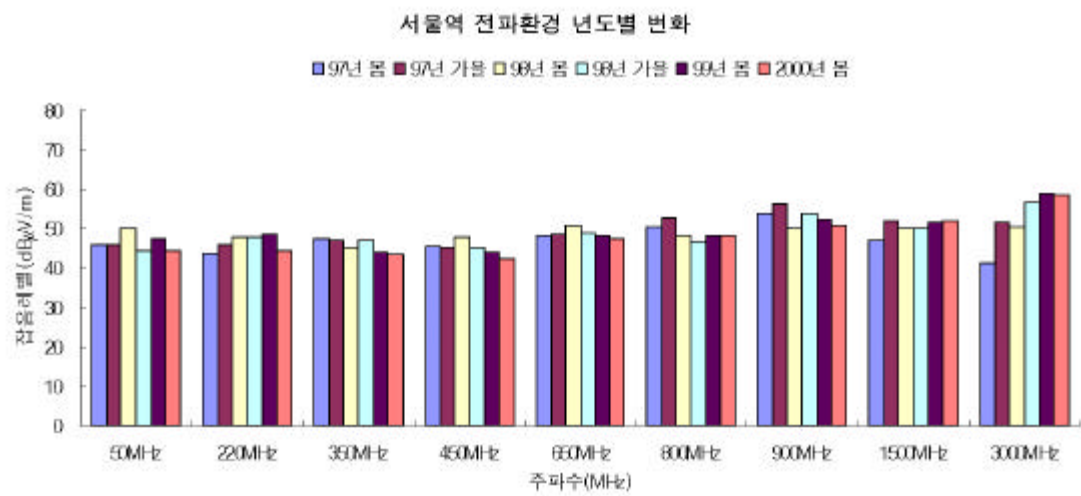
가 가

.

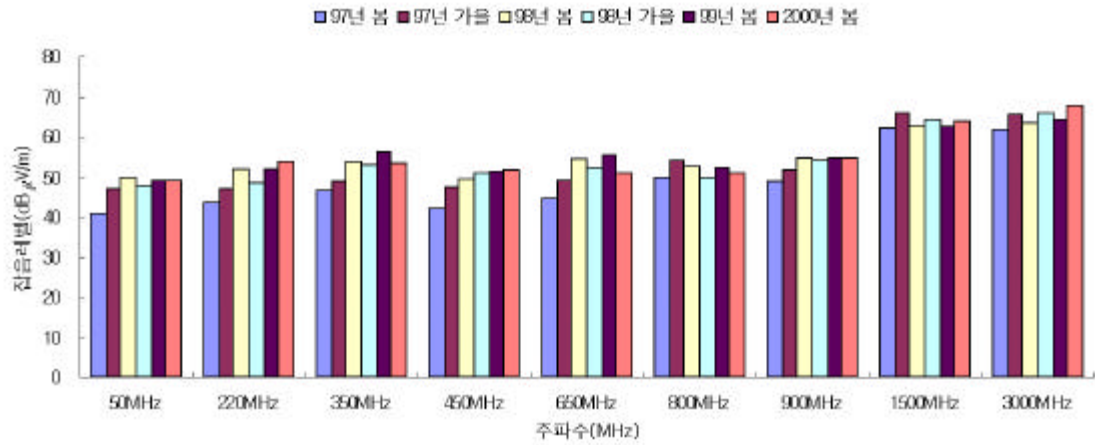
○ 가

2.

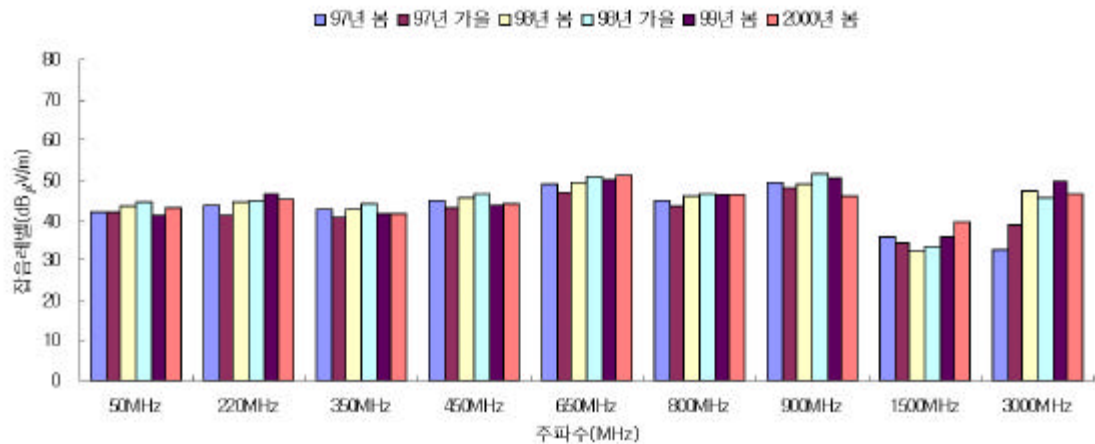
가.



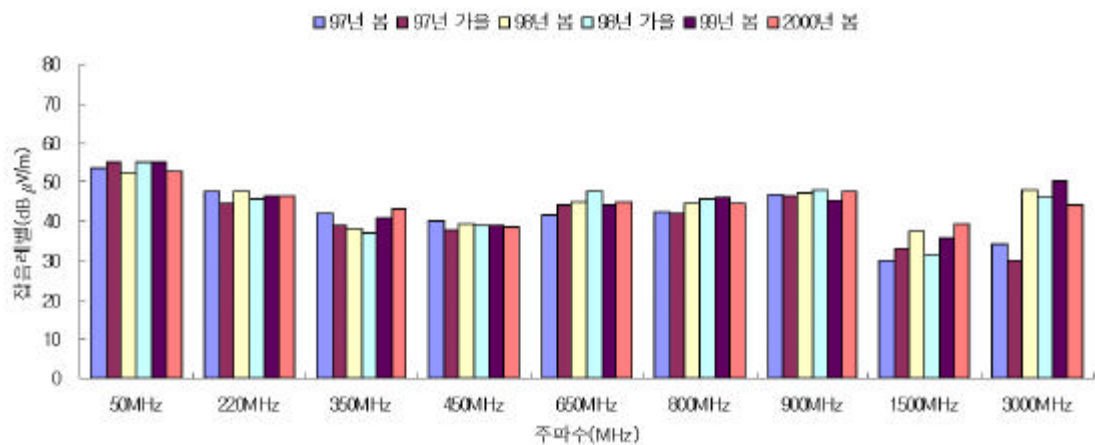
신촌 전파환경 년도별 변화



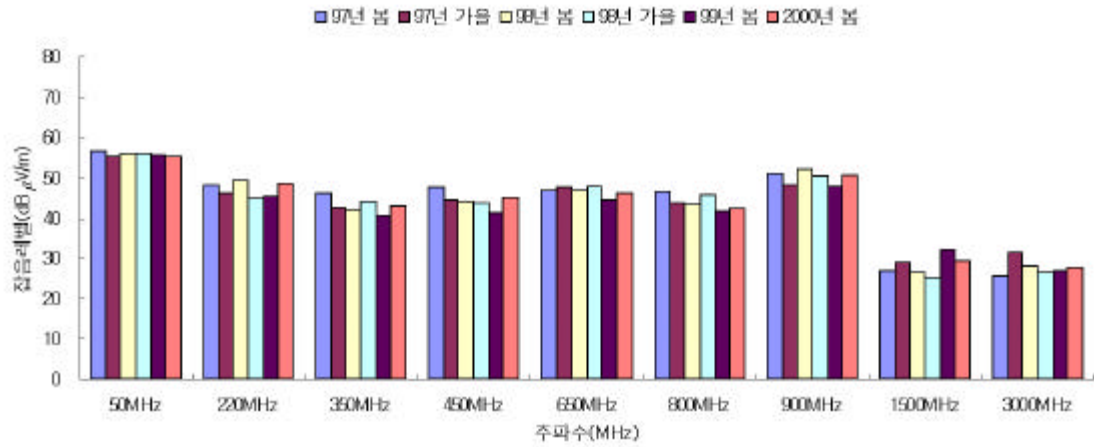
잠실 전파환경 년도별 변화



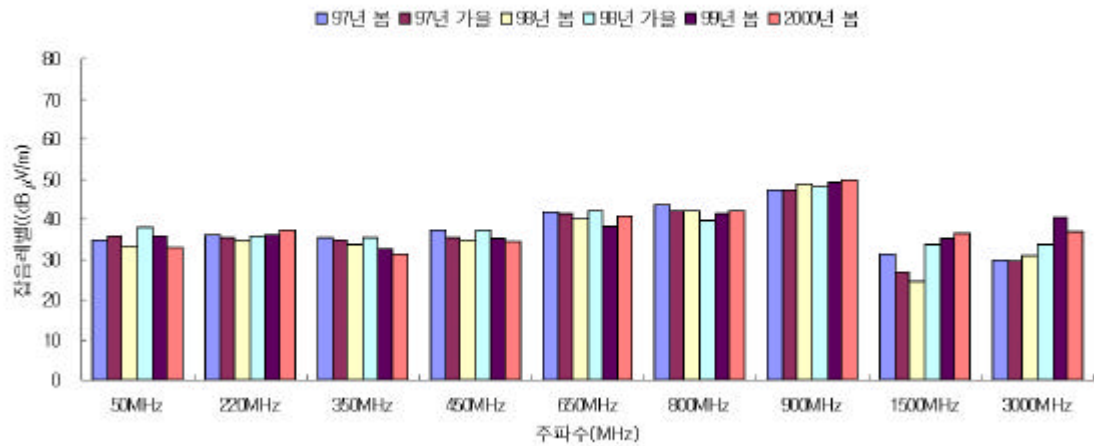
구로 전파환경 년도별 변화



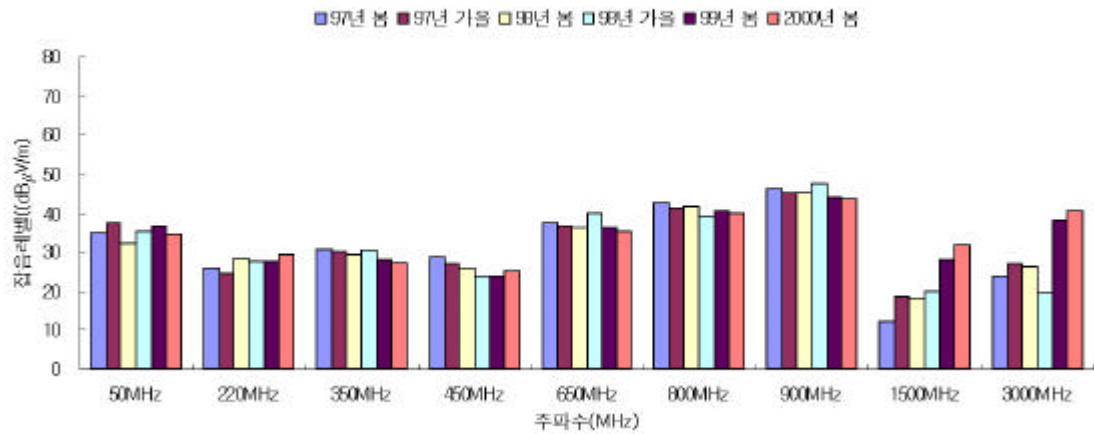
면옥동 전파환경 년도별 변화



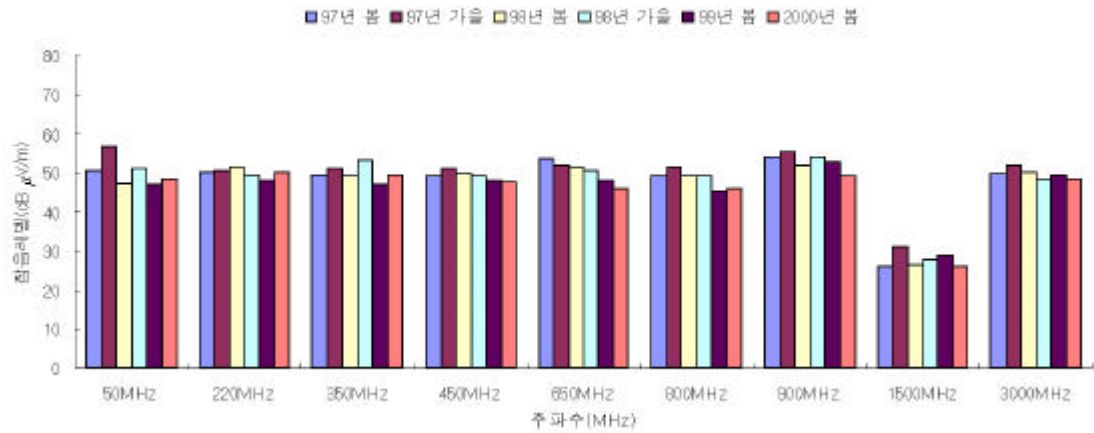
김포공항 전파환경 년도별 변화



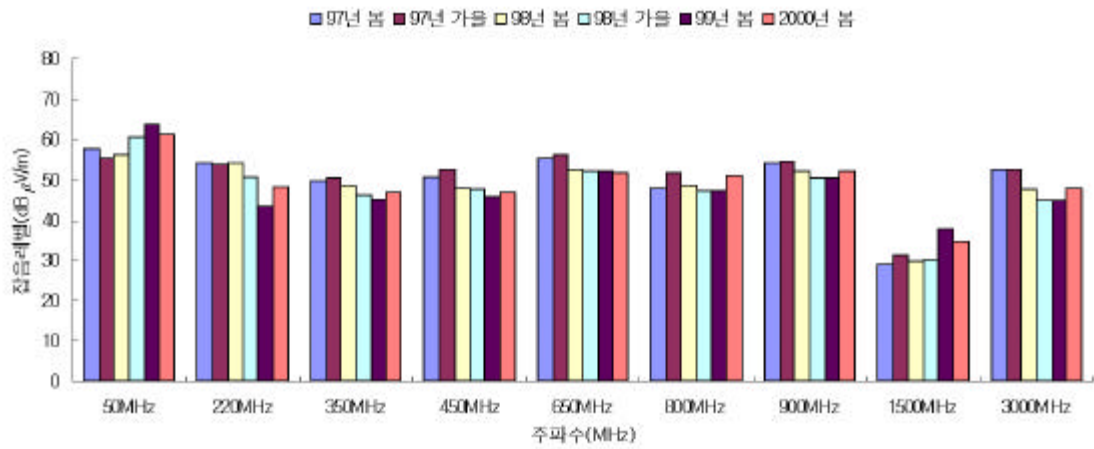
북한산 전파환경 년도별 변화



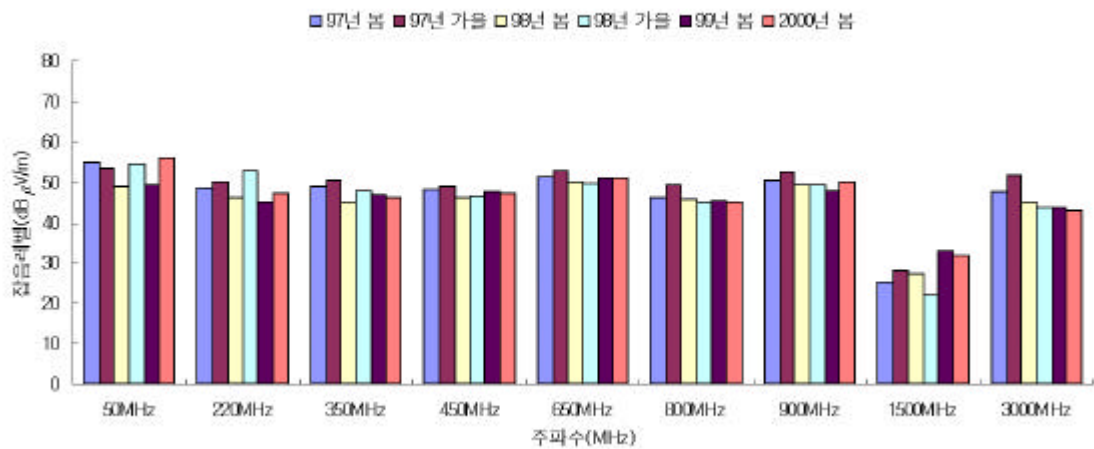
성남 전파환경 년도별 변화



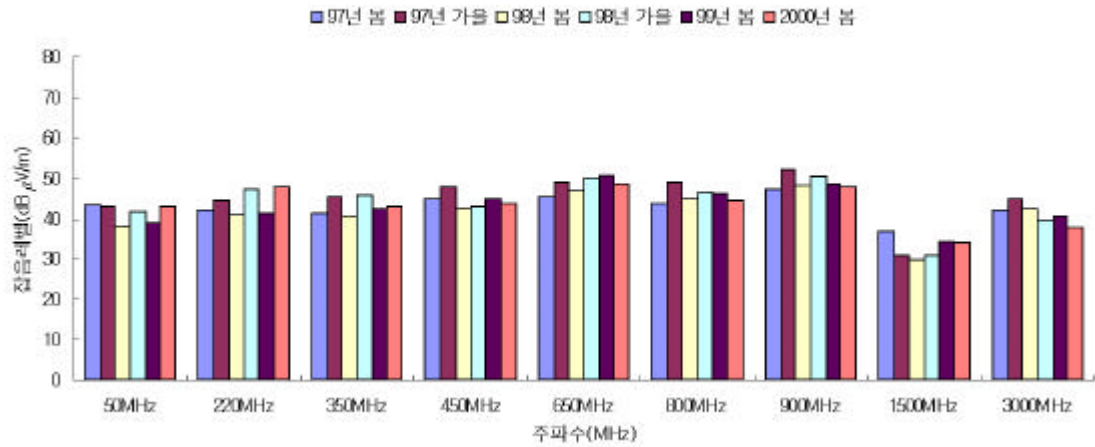
수원 전파환경 년도별 변화



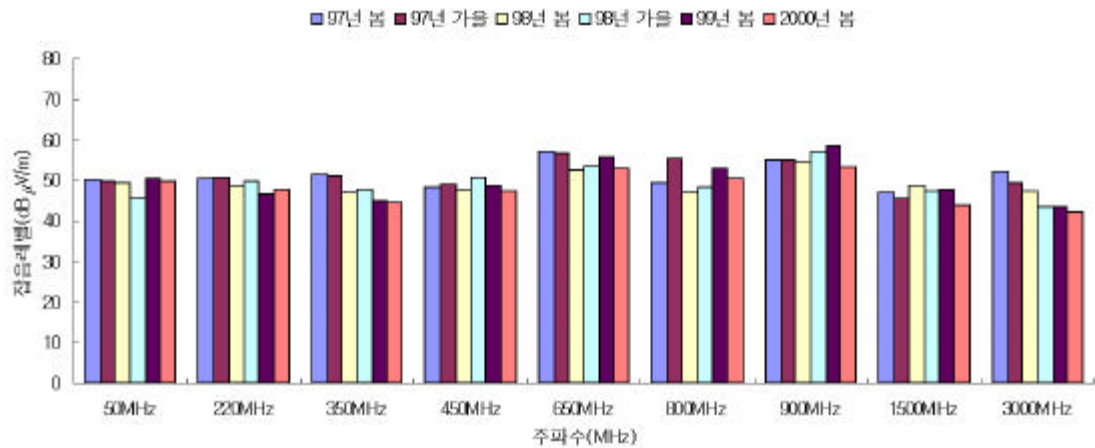
안산 전파환경 년도별 변화



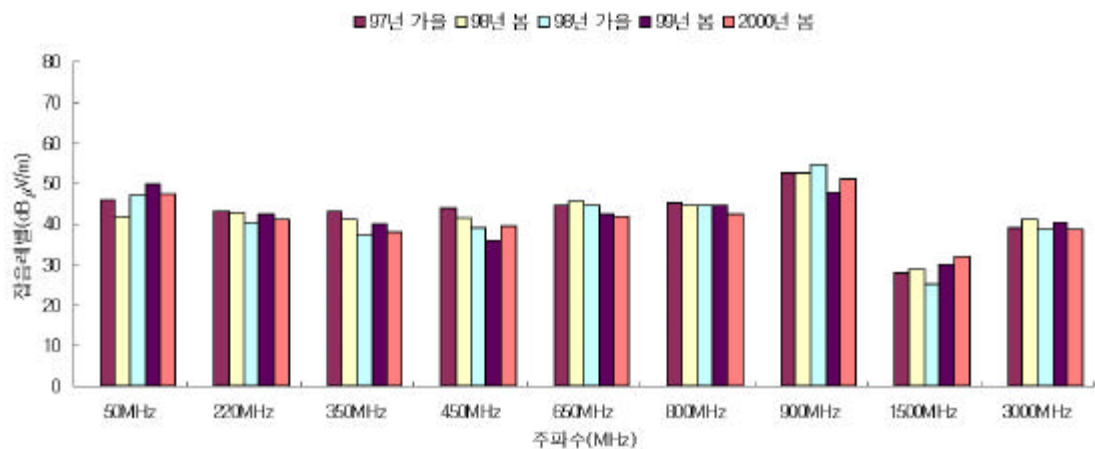
인천 전파환경 년도별 변화



광명 전파환경 년도별 변화

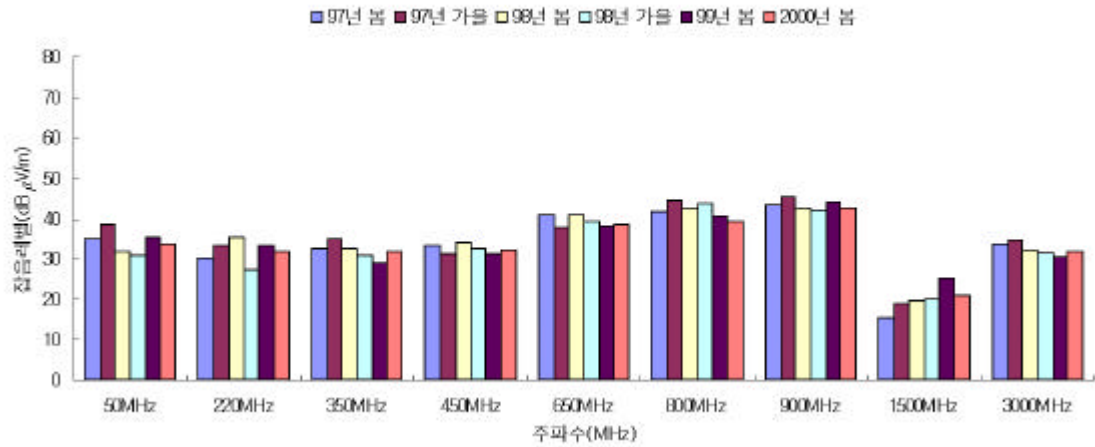


인천항 전파환경 년도별 변화

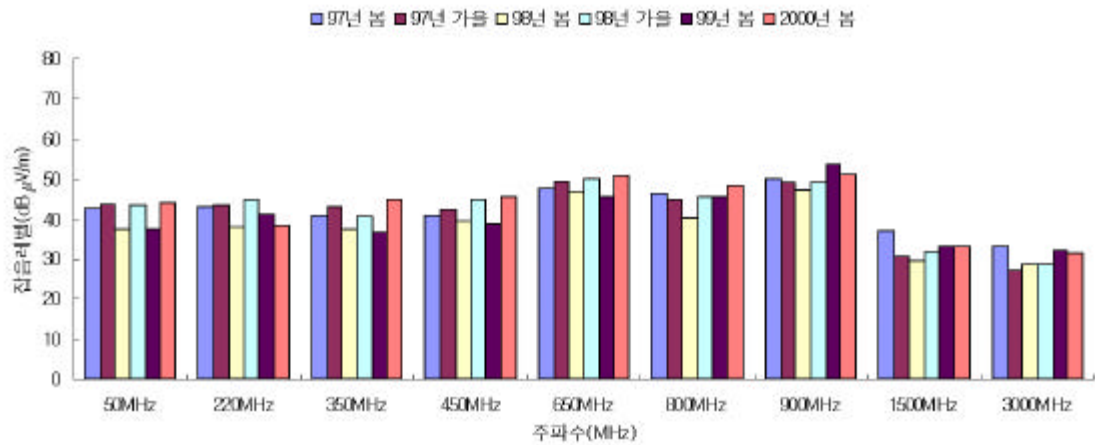




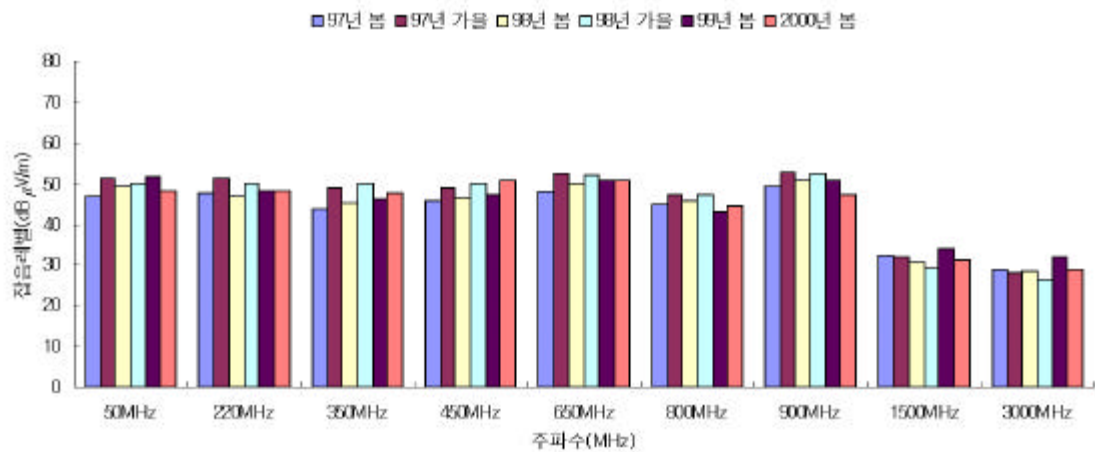
영종도 전파환경 년도별 변화



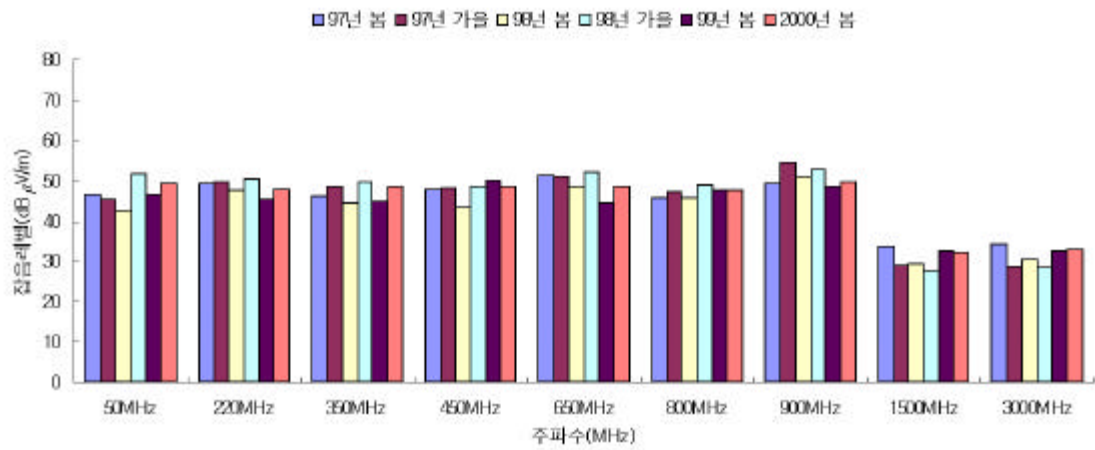
강릉 전파환경 년도별 변화



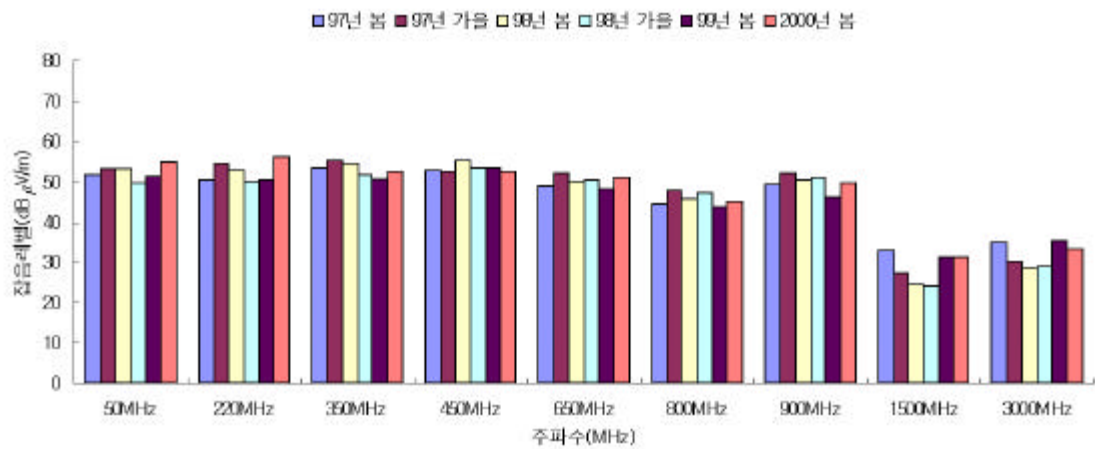
원주 전파환경 년도별 변화



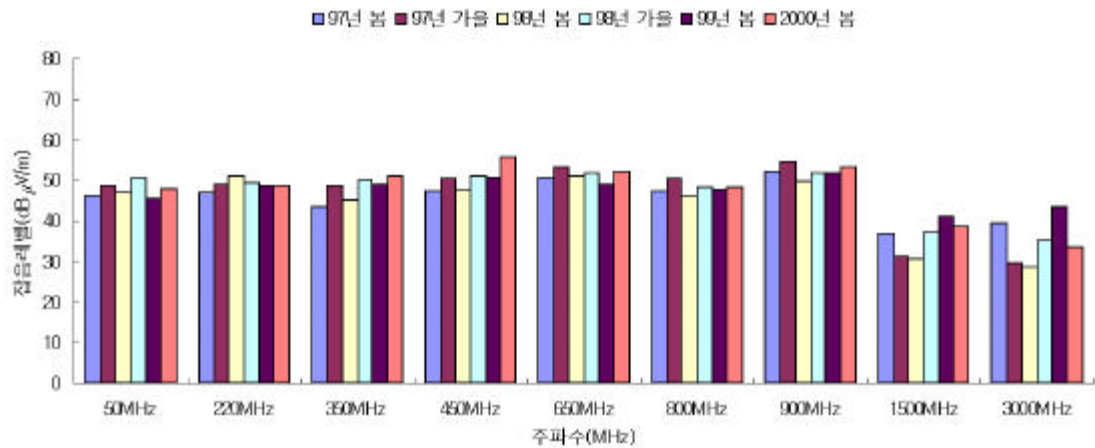
춘천 전파환경 년도별 변화



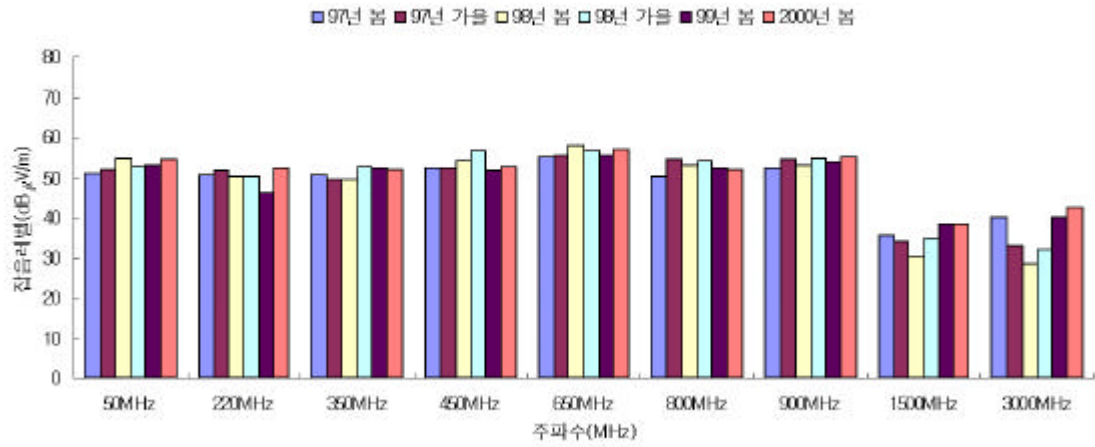
공주 전파환경 년도별 변화



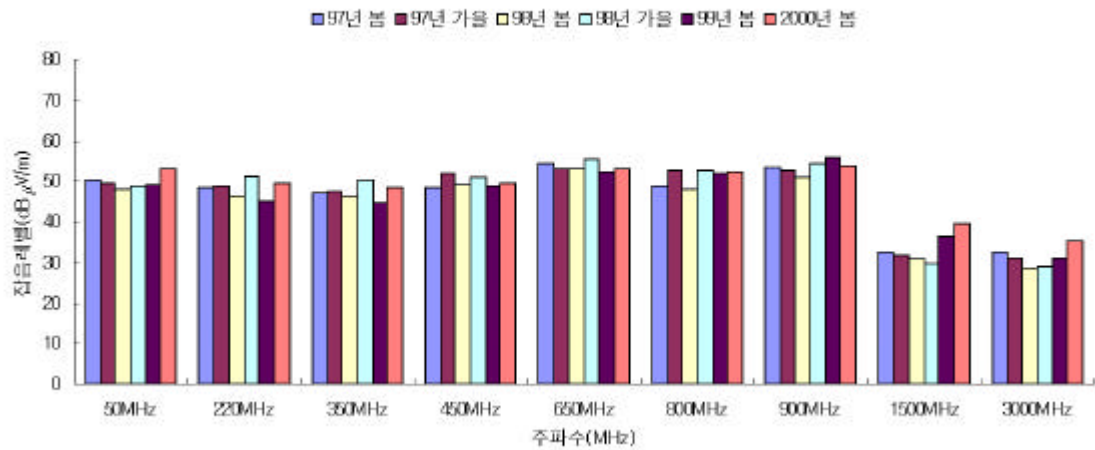
대전 전파환경 년도별 변화



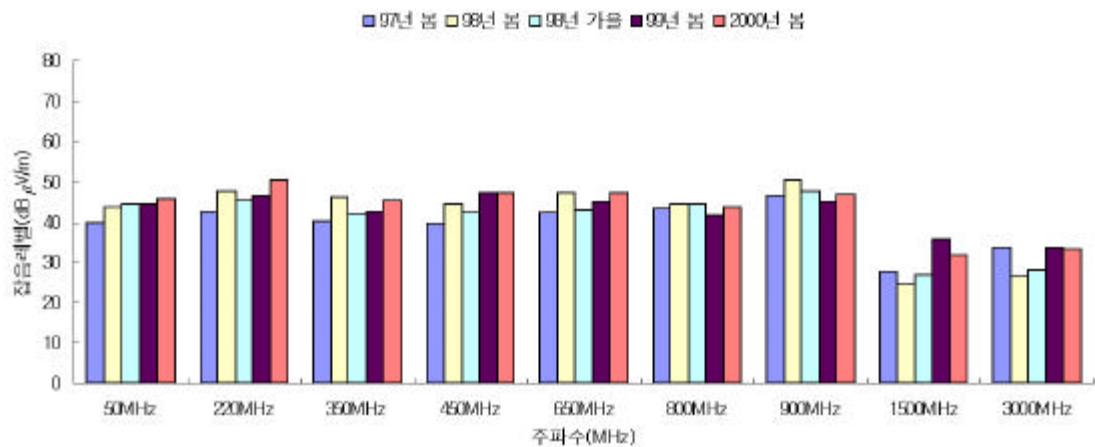
천안 전파환경 년도별 변화



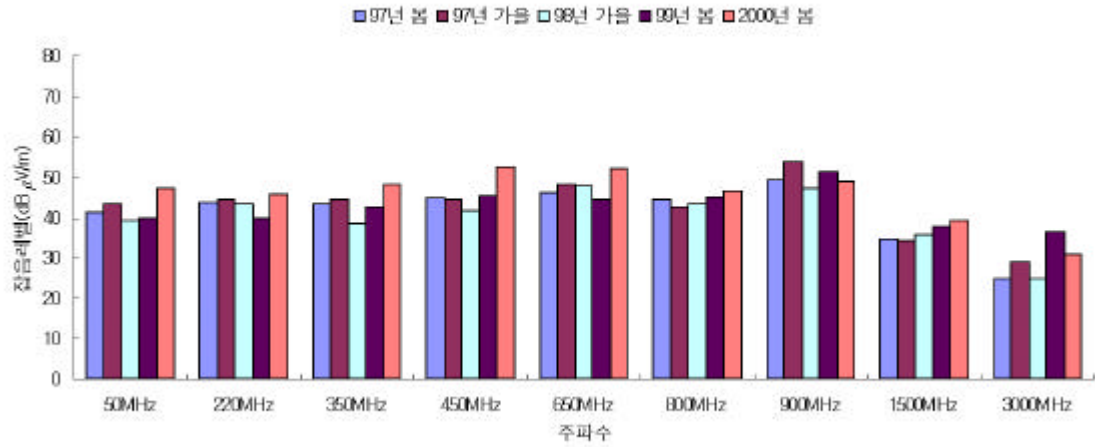
청주 전파환경 년도별 변화



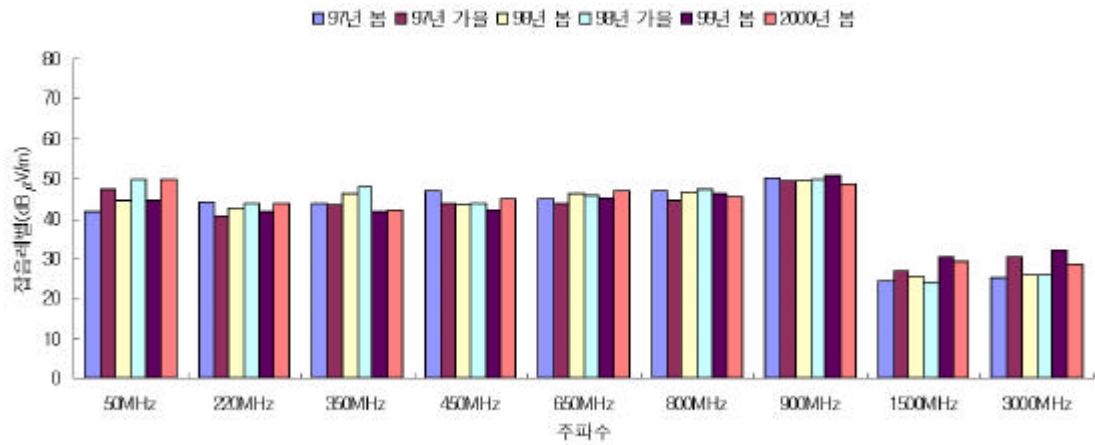
충주 전파환경 년도별 변화



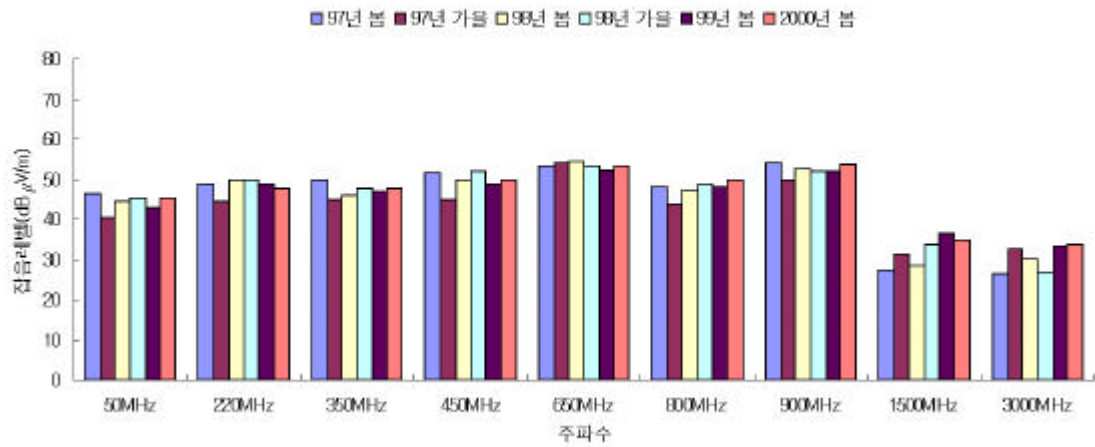
광주 전파환경 년도별 변화



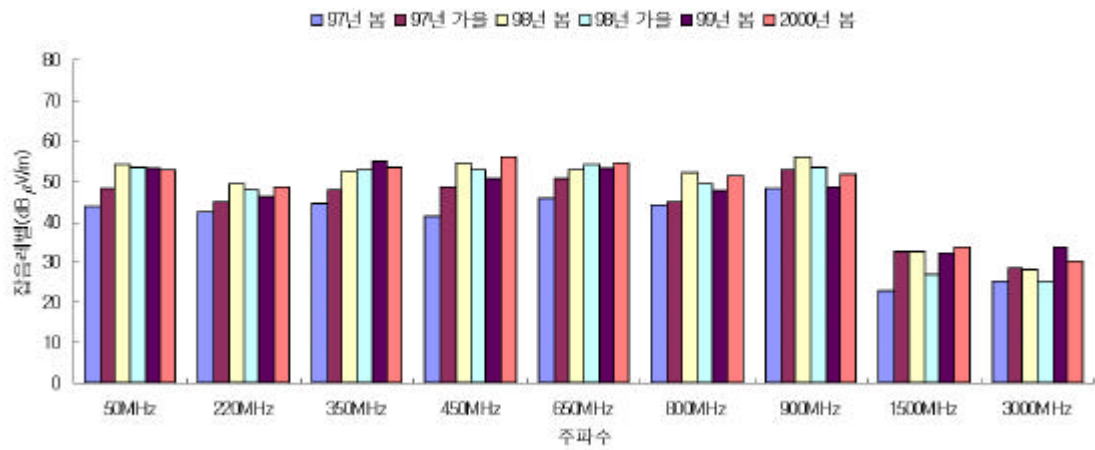
순천 전파환경 년도별 변화



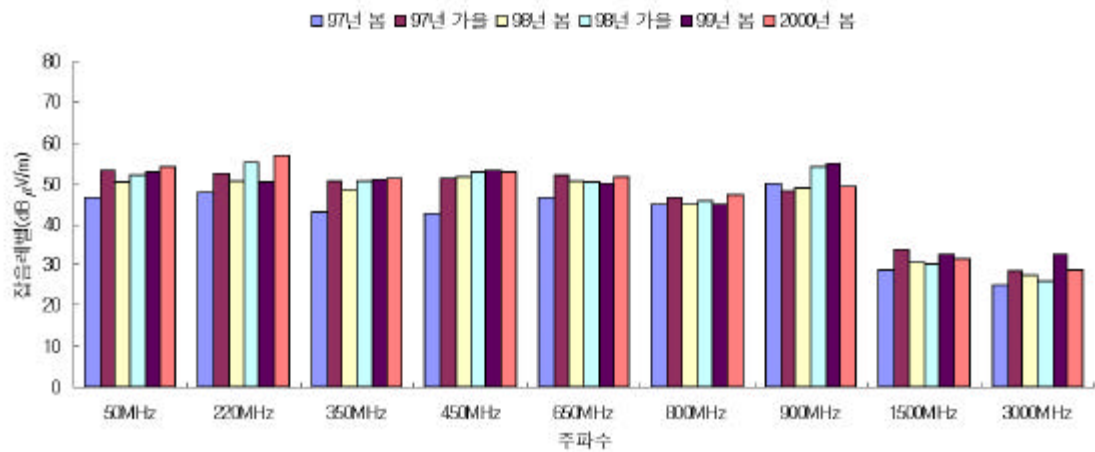
익산 전파환경 년도별 변화



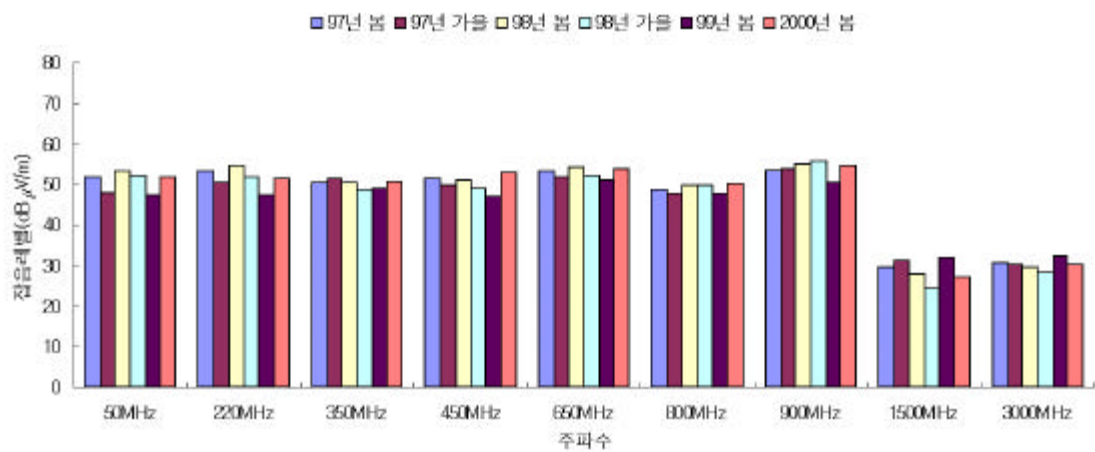
전주 전파환경 년도별 변화



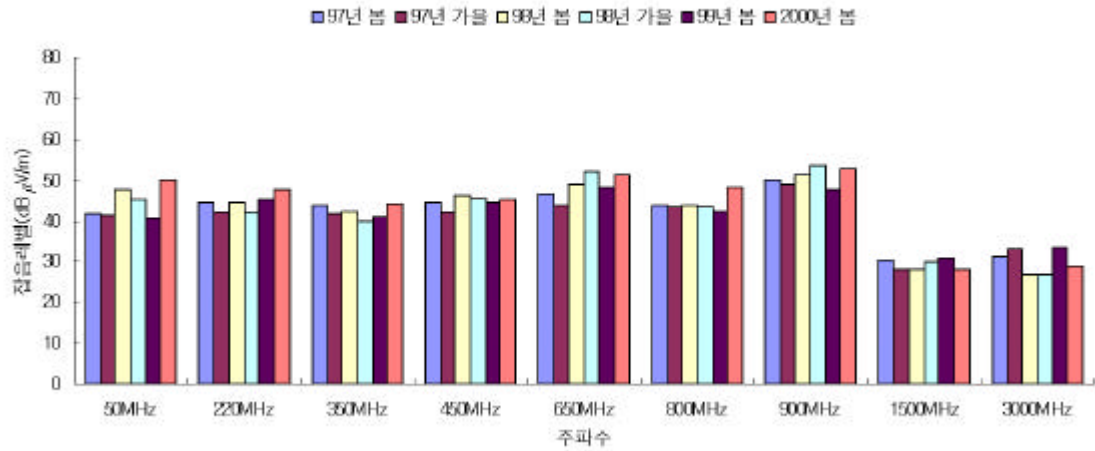
목포 전파환경 년도별 변화



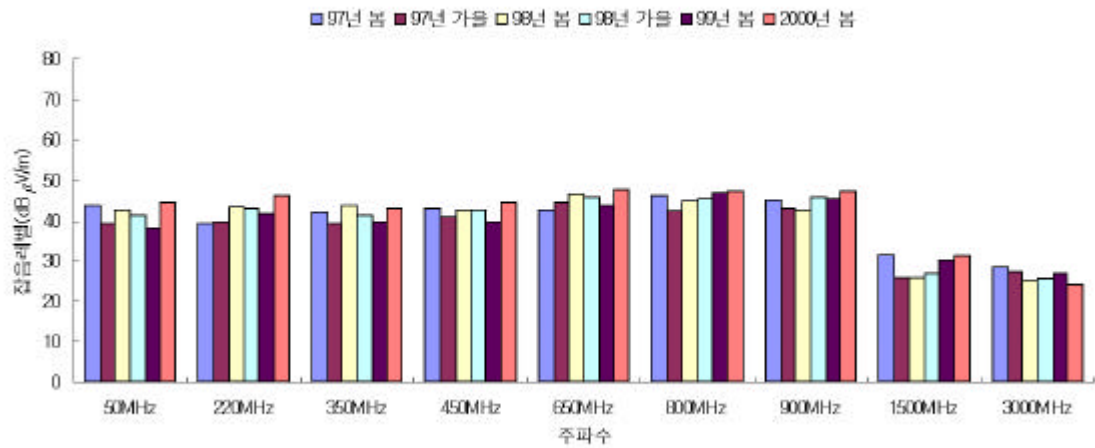
대구 전파환경 년도별 변화



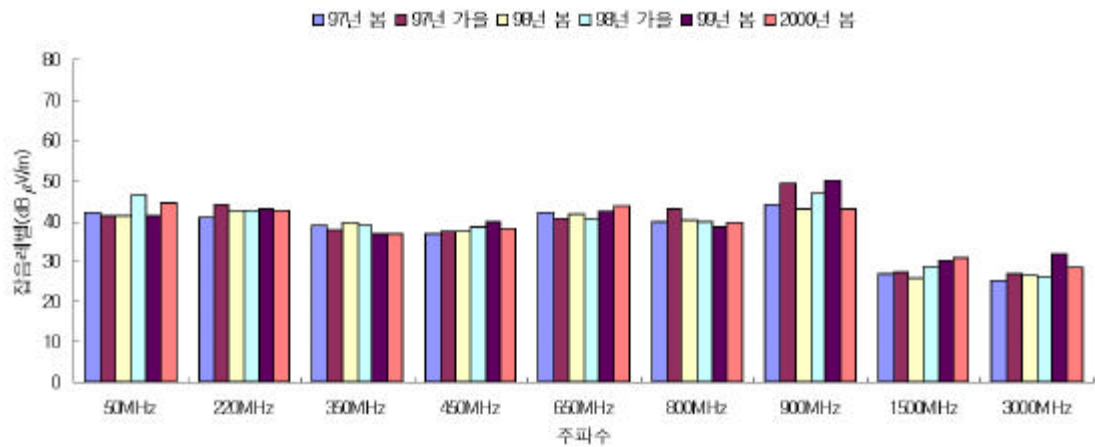
포항 전파환경 년도별 변화



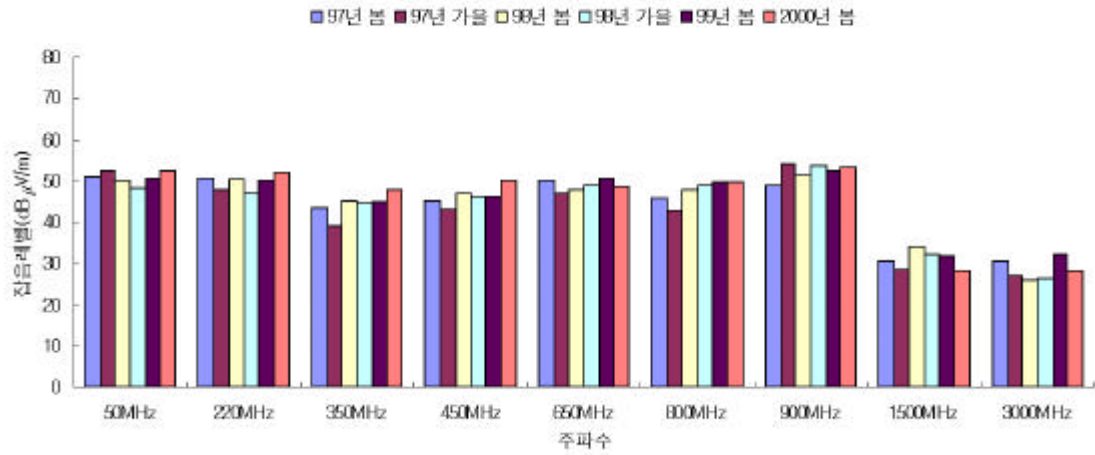
안동 전파환경 년도별 변화



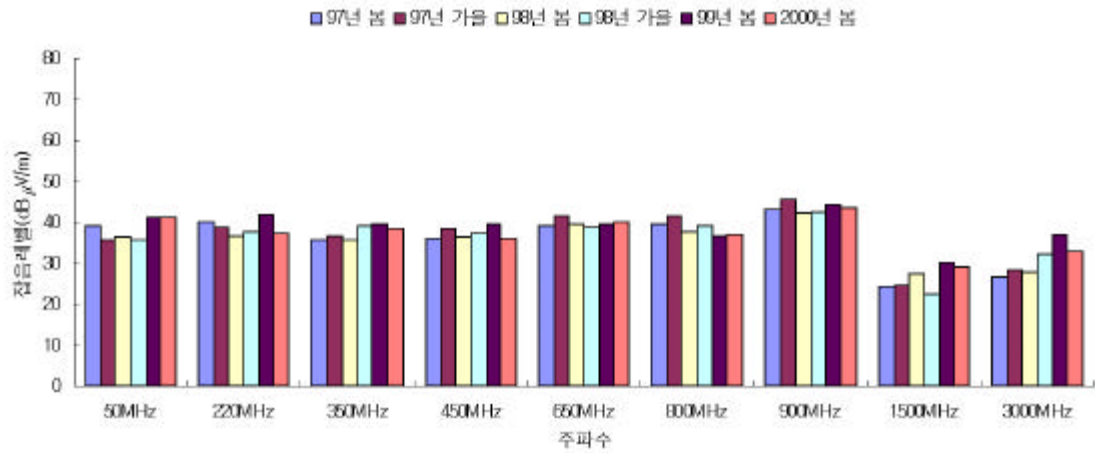
창원 전파환경 년도별 변화



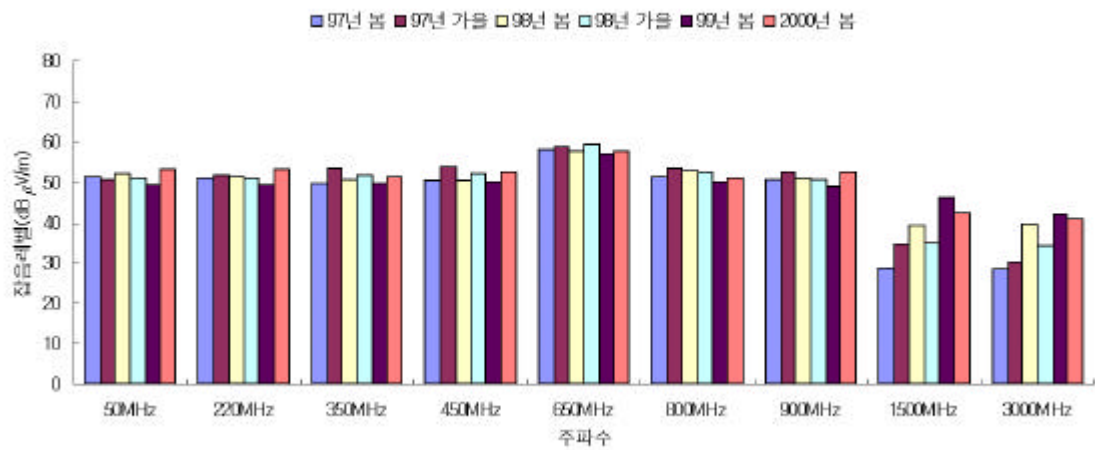
구미 전파환경 년도별 변화



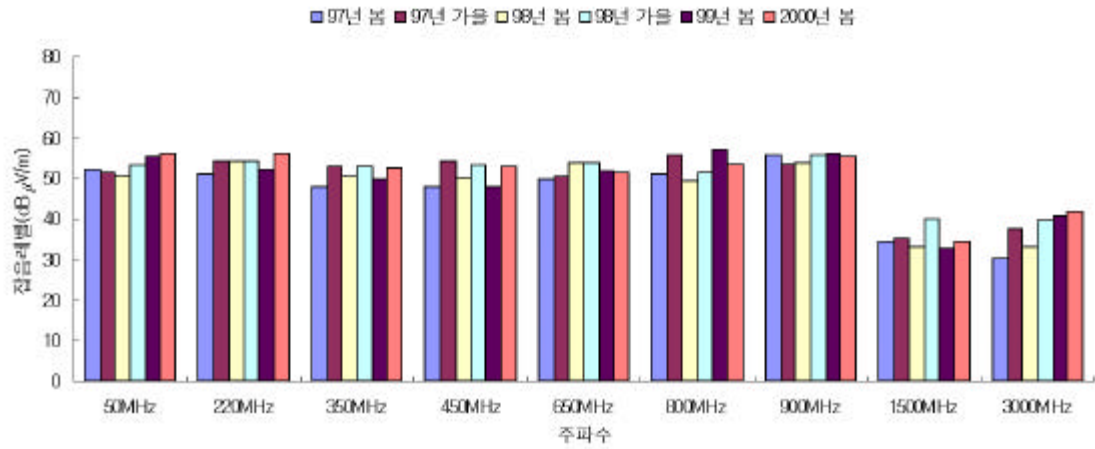
김해 전파환경 년도별 변화



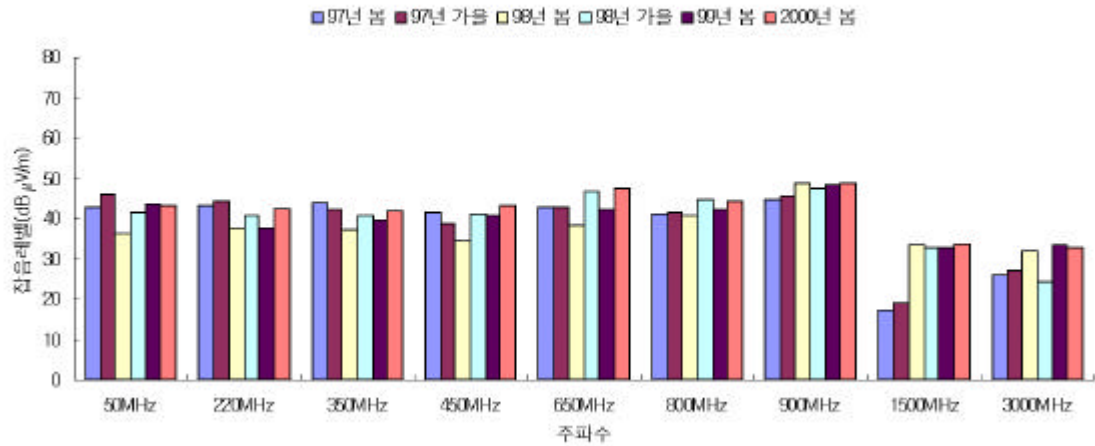
서면 전파환경 년도별 변화



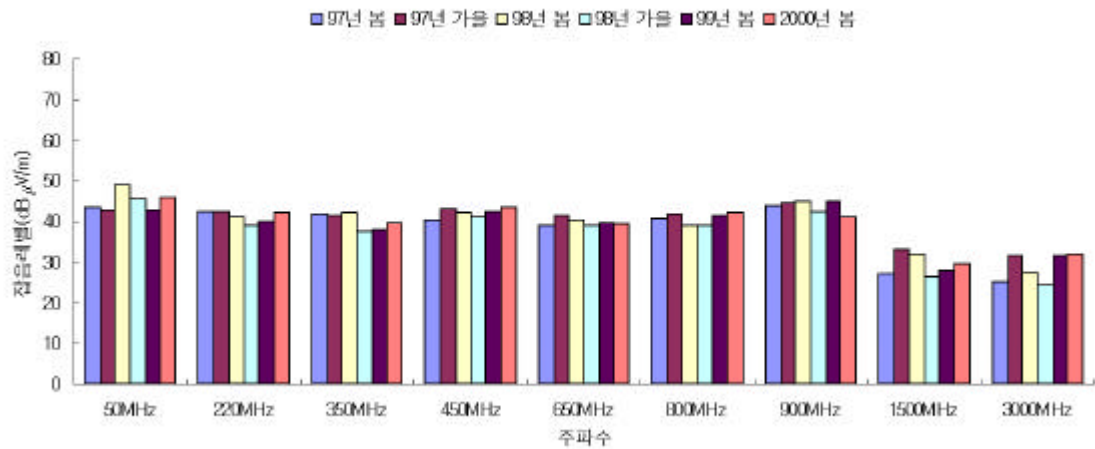
광복동 전파환경 년도별 변화



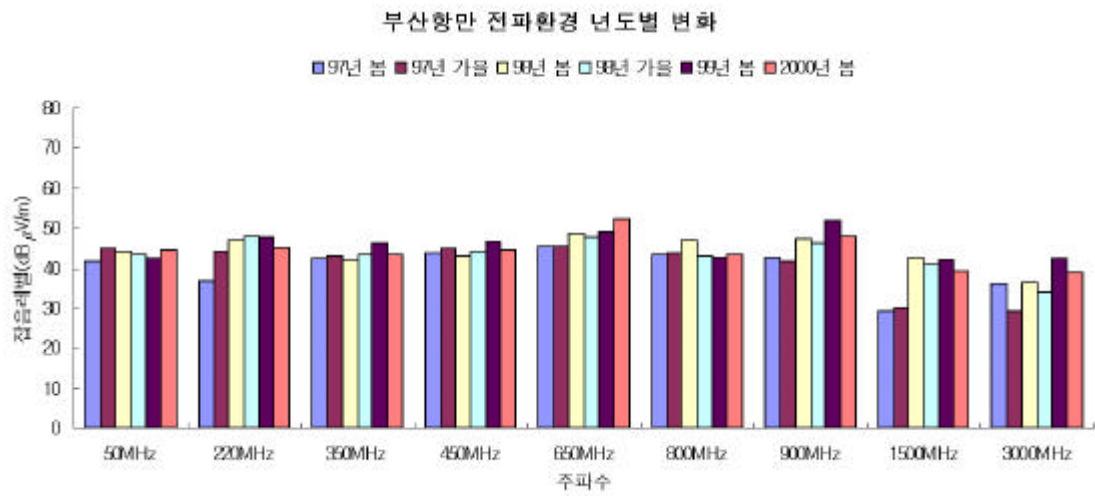
사직동 전파환경 년도별 변화



사상공단 전파환경 년도별 변화







○

가

가

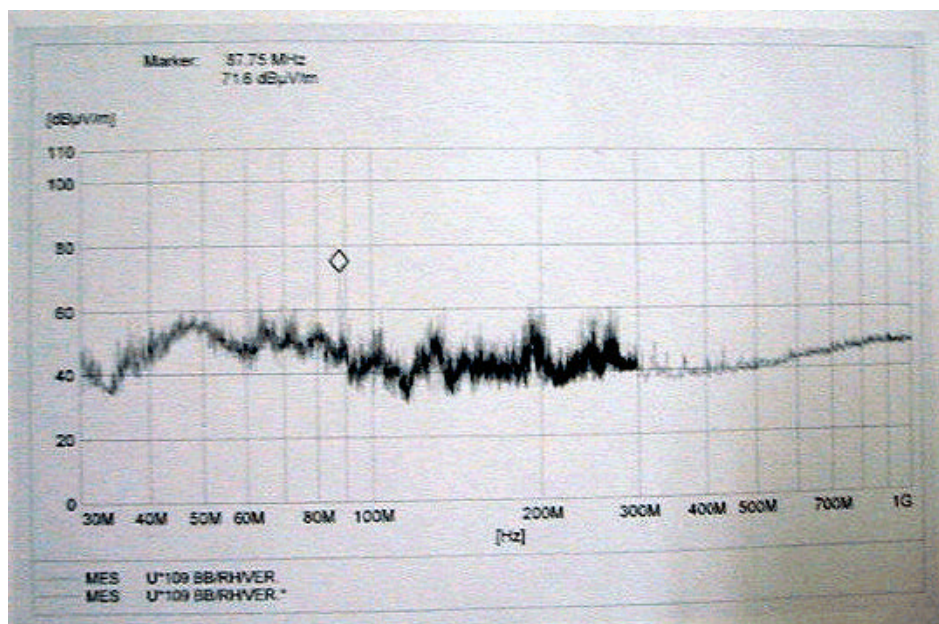
○

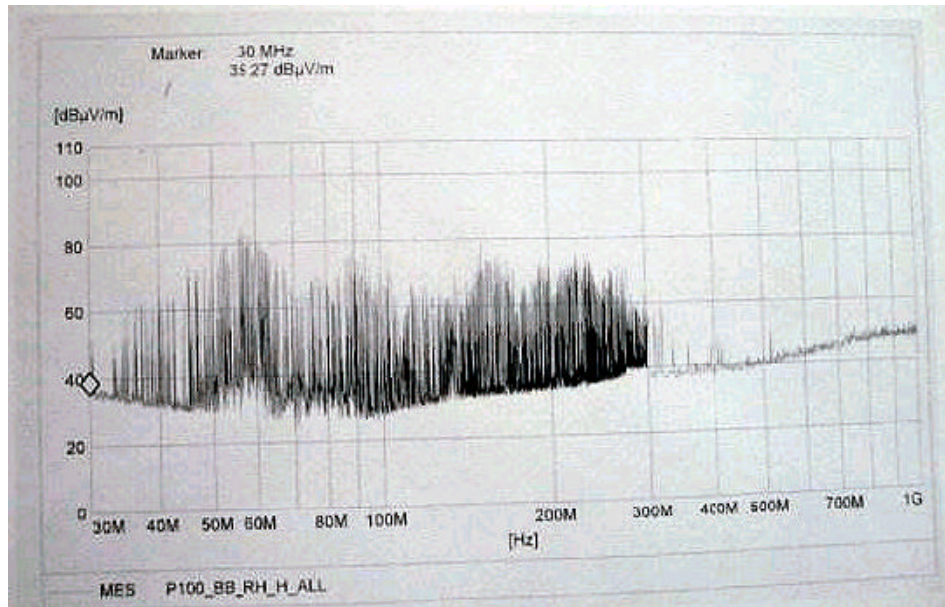
가

300MHz

EMI

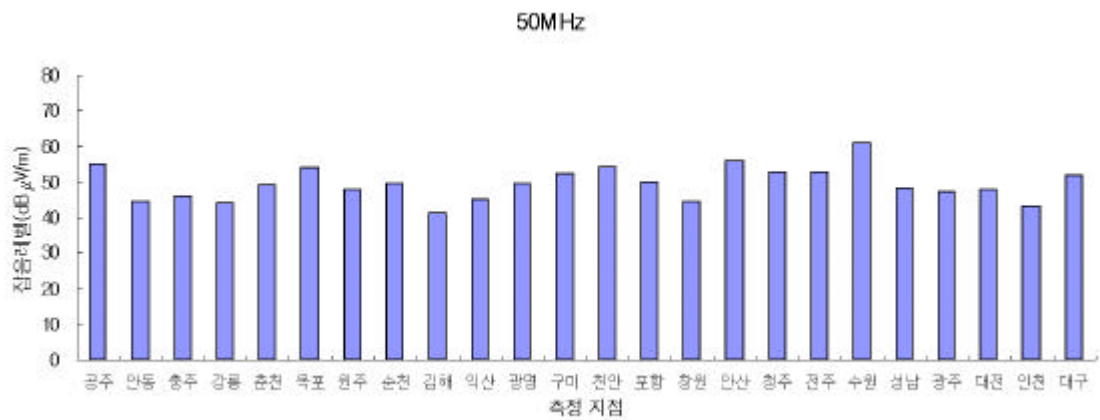
EMI



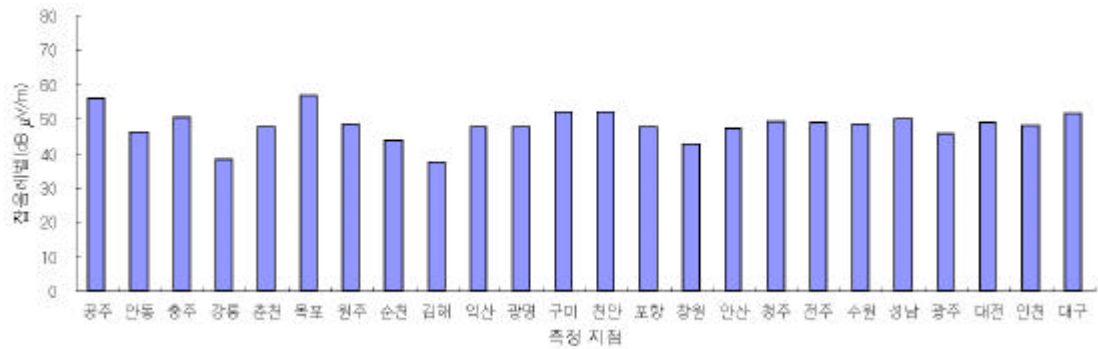


- .
- 가 .
- PCS .
- 가 .
- 가 .
- .

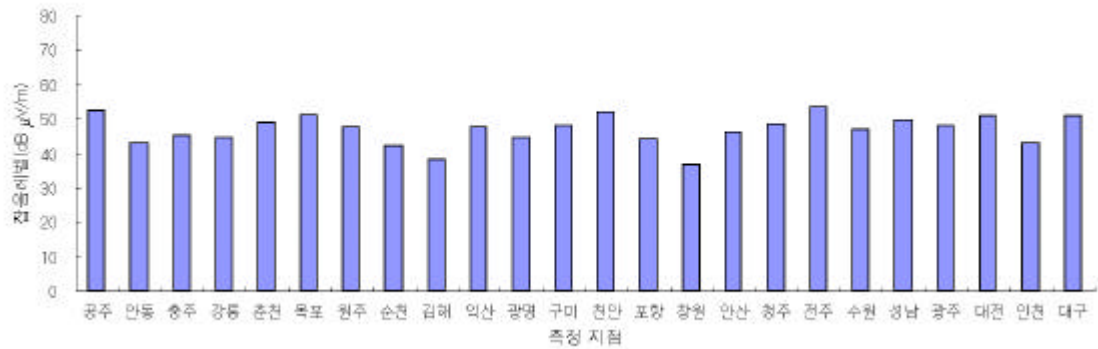
3.



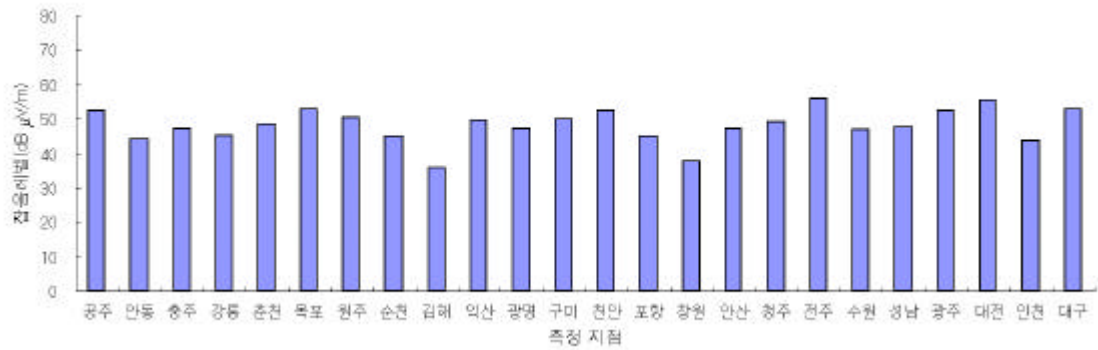
220MHz



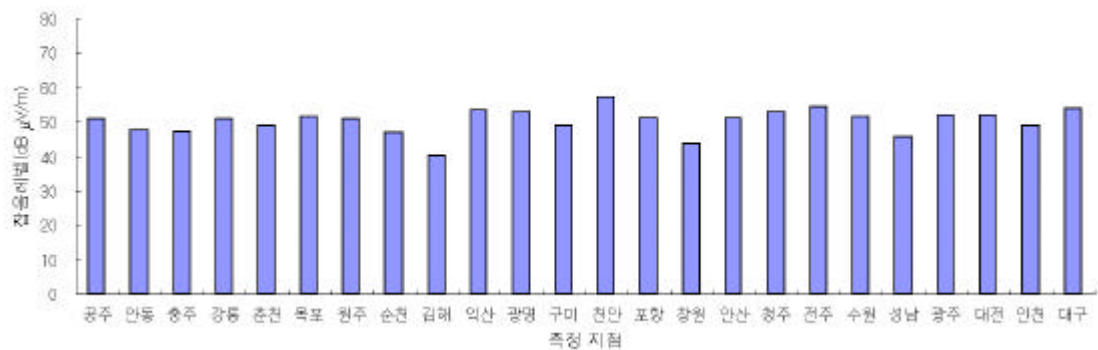
350MHz



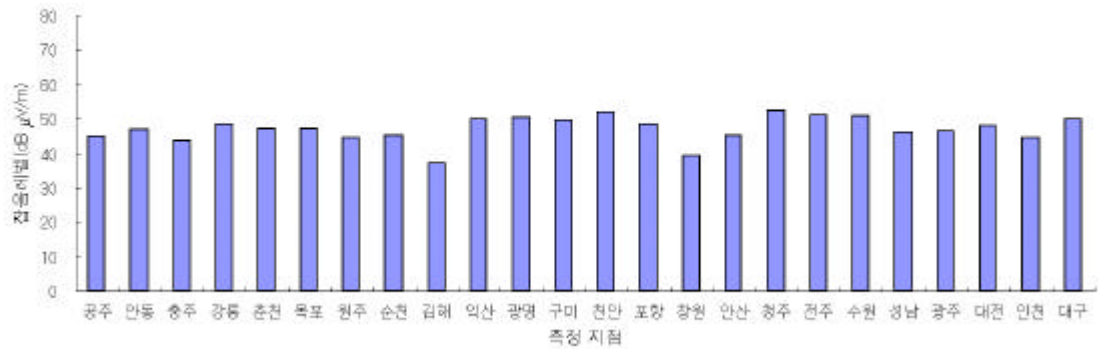
450MHz



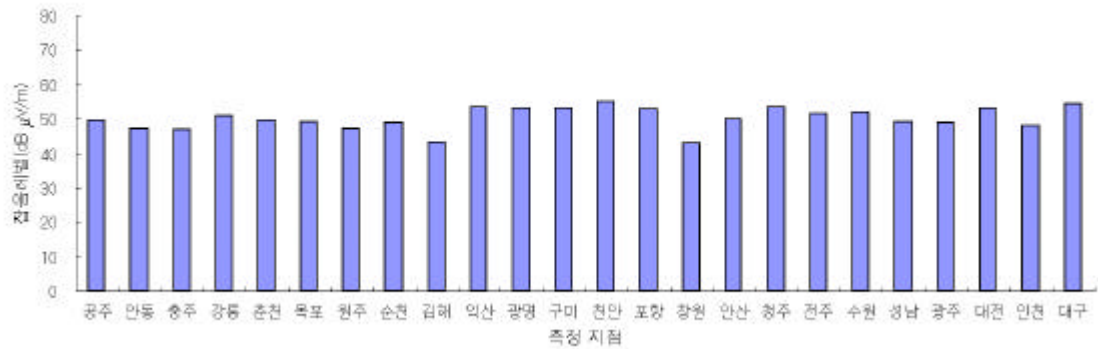
600MHz



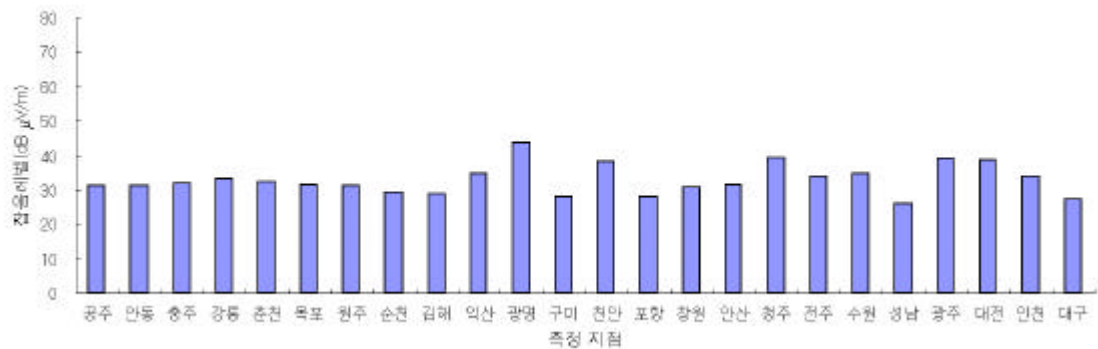
800MHz



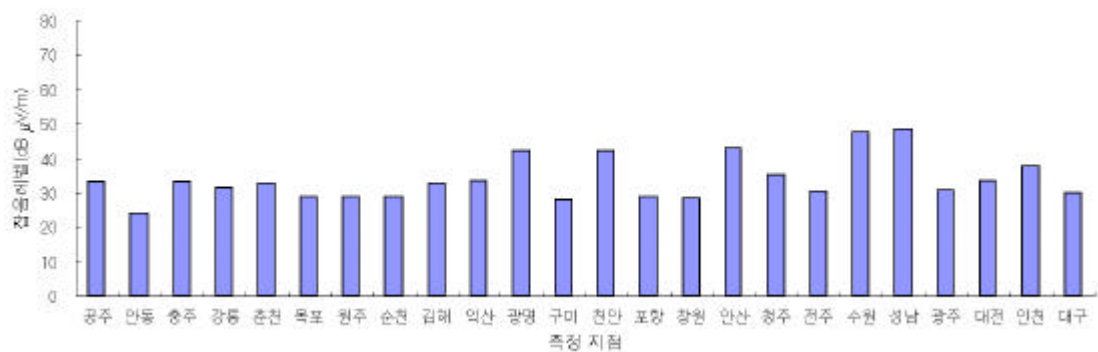
900MHz



1500MHz



3000MHz



○ 50MHz 가 가

가 가

가 .

○ VHF UHF

.

○ 가

, ,

.

○

.

### 3

, (28 ) 40 5

.

.

가

가

가

.

가

.

.

,

.

,

.

,

.

- [1] W. R. Lauber, et. al., 'An Update of CCIR Business and Residential Noise Levels', IEEE, pp 348 - 353, 1994
- [2] ITU, 'Man-Made Radio Noise', ITU-R report 258-5, Annex to Volume , 1990
- [3] , , 1992
- [4] , , , 1994, 1995, 1996, 1997, 1998
- [5] , 307 , , 1983
- [6] CISPR 16- 1, Radio disturbance and immunity measuring apparatus, 1993
- [7] CISPR 16-2, Methods of disturbance and immunity measurements, 1996
- [8] G. H. Hagn, 'Man-Made Radio Noise', CRC HandBook of Atmospherics Volume I Part 1, pp 329 - 355
- [9] ITU, 'World Distribution and Characteristics of Atmospheric Radio Noise', CCIR report 322, 1964
- [10] Johnson and Jasik, 'Antenna Engineering HandBook' 2nd edition, McGraw-Hill, 1984